

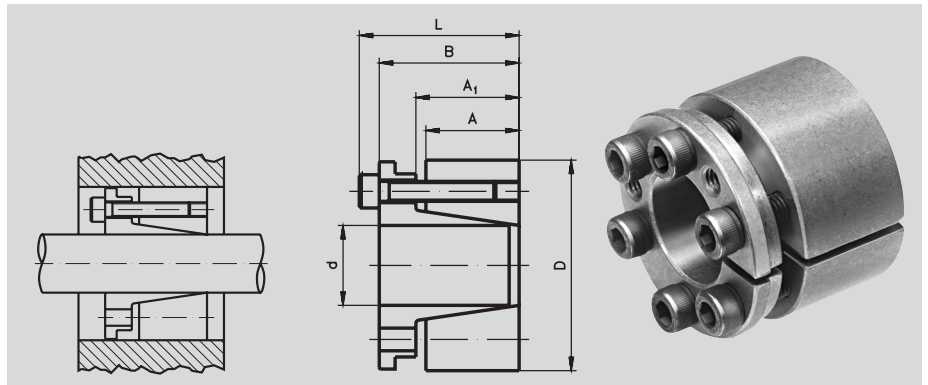
Clamping Sets COM Version D

Material: Steel.

- For fixing a hub (e.g. drive wheel, rotor or similar) on a shaft.
- For high torques.
- Self-centering.
- Slight axial offset possible during assembly.

Concentricity: 0.02 to 0.04 mm.

Ordering Details: e.g.: Product No. 615 570 19, Clamping set COM version D, 19 mm



| Product No. | d mm | D mm | A mm | A ₁ mm | B mm | L mm | at T _A transmittable | | Surface Pressure | | Screws DIN 912 12.9 Number x size | T _A Nm | Weight kg |
|-------------|---------|---------|---------|----------------------|---------|---------|------------------------------------|-----------------------|--|--|--|----------------------|--------------|
| | | | | | | | T Nm | F _{ax} kN | Shaft P _w N/mm ² | Hub P _N N/mm ² | | | |
| 615 570 19 | 19 | 47 | 26 | 31 | 39 | 45 | 353 | 31 | 228 | 98 | 4x M6x25 | 17 | 0,39 |
| 615 570 20 | 20 | 47 | 26 | 31 | 39 | 45 | 382 | 33 | 226 | 98 | 4x M6x25 | 17 | 0,38 |
| 615 570 22 | 22 | 47 | 26 | 31 | 39 | 45 | 431 | 33 | 215 | 93 | 4x M6x25 | 17 | 0,37 |
| 615 570 24 | 24 | 50 | 26 | 31 | 39 | 45 | 519 | 50 | 215 | 102 | 6x M6x25 | 17 | 0,43 |
| 615 570 25 | 25 | 50 | 26 | 31 | 39 | 45 | 578 | 50 | 225 | 102 | 6x M6x25 | 17 | 0,42 |
| 615 570 28 | 28 | 55 | 26 | 31 | 39 | 45 | 686 | 50 | 215 | 107 | 6x M6x25 | 17 | 0,55 |
| 615 570 30 | 30 | 55 | 26 | 31 | 39 | 45 | 745 | 50 | 196 | 117 | 6x M6x25 | 17 | 0,56 |
| 615 570 32 | 32 | 60 | 26 | 31 | 39 | 45 | 912 | 67 | 225 | 111 | 8x M6x25 | 17 | 0,60 |
| 615 570 35 | 35 | 60 | 26 | 31 | 39 | 45 | 1010 | 67 | 196 | 116 | 8x M6x25 | 17 | 0,50 |
| 615 570 38 | 38 | 65 | 26 | 31 | 39 | 45 | 1216 | 67 | 205 | 121 | 8x M6x25 | 17 | 0,60 |
| 615 570 40 | 40 | 65 | 26 | 31 | 39 | 45 | 1323 | 67 | 196 | 122 | 8x M6x25 | 17 | 0,60 |
| 615 570 42 | 42 | 75 | 30 | 36 | 47 | 55 | 2128 | 67 | 232 | 137 | 6x M8x30 | 41 | 1,00 |
| 615 570 45 | 45 | 75 | 30 | 36 | 47 | 55 | 2304 | 92 | 232 | 137 | 6x M8x30 | 41 | 1,00 |
| 615 570 48 | 48 | 80 | 30 | 36 | 47 | 55 | 2461 | 110 | 213 | 132 | 6x M8x30 | 41 | 1,10 |
| 615 570 50 | 50 | 80 | 30 | 36 | 47 | 55 | 2530 | 123 | 213 | 132 | 6x M8x30 | 41 | 1,00 |
| 615 570 55 | 55 | 85 | 30 | 36 | 47 | 55 | 3138 | 123 | 218 | 142 | 8x M8x30 | 41 | 1,10 |
| 615 570 60 | 60 | 90 | 30 | 36 | 47 | 55 | 3314 | 123 | 194 | 153 | 8x M8x30 | 41 | 1,20 |
| 615 570 65 | 65 | 95 | 30 | 36 | 47 | 55 | 4079 | 123 | 208 | 137 | 8x M8x30 | 41 | 1,30 |
| 615 570 70 | 70 | 110 | 40 | 46 | 61 | 71 | 6707 | 193 | 220 | 140 | 8x M10x35 | 83 | 2,20 |
| 615 570 75 | 75 | 115 | 40 | 46 | 61 | 71 | 7354 | 193 | 205 | 135 | 8x M10x35 | 83 | 2,50 |
| 615 570 80 | 80 | 120 | 40 | 46 | 61 | 71 | 7943 | 193 | 196 | 127 | 8x M10x35 | 83 | 2,60 |
| 615 570 85 | 85 | 125 | 40 | 46 | 61 | 71 | 9512 | 242 | 205 | 142 | 10x M10x35 | 83 | 2,80 |
| 615 570 90 | 90 | 130 | 40 | 46 | 61 | 71 | 10100 | 242 | 196 | 135 | 10x M10x35 | 83 | 2,70 |

Other sizes on request.

Fit

Shaft h8, Hub H8.
Surface roughness hub/shaft max.
16 µm.

Mounting

Slightly oil the clamping set before mounting, do not use MoS2 or grease.
Tighten the screws evenly and crosswise in several steps to the set torque.

Demounting

Remove all tensioning screws and screw them into the unused forcing threads of the front tensioning ring, until it is released.