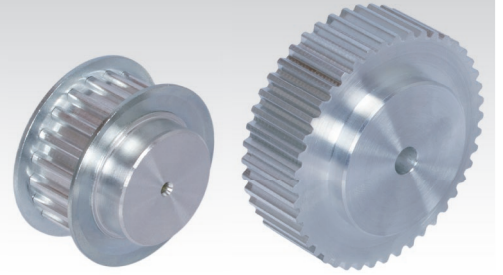
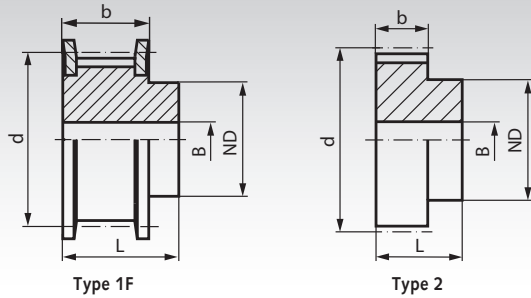


## T Pulleys, Pitch 10 mm Made from Aluminium



Material: Aluminium similar to EN AW2017A. Flanges zinc-plated steel.

Ordering Details: e.g.: Product No. 164 212 00, Pulley, Pitch T10, 12 Teeth, Timing Belt Width 16 mm

### Profile T 10, Timing Belt Width 16 mm

Product No. Timing Belt Width 16 mm	Type	Number of teeth	Type	Outside Ø			ND mm	b mm	L mm	Pilot Hole B mm	Weight g
				Pulley mm	Flange mm	d mm					
164 212 00	31 T10/12-2	12	1F	36,35	42	38,20	28	21	31	6	76
164 214 00	31 T10/14-2	14	1F	42,70	48	44,56	32	21	31	8	104
164 215 00	31 T10/15-2	15	1F	45,90	51	47,75	32	21	31	8	116
164 216 00	31 T10/16-2	16	1F	49,10	54	50,93	35	21	31	8	134
164 218 00	31 T10/18-2	18	1F	55,45	60	57,30	40	21	31	8	167
164 219 00	31 T10/19-2	19	1F	58,65	66	60,48	44	21	31	8	184
164 220 00	31 T10/20-2	20	1F	61,80	66	63,66	46	21	31	8	208
164 222 00	31 T10/22-2	22	1F	68,20	75	70,03	52	21	31	8	253
164 224 00	31 T10/24-2	24	1F	74,55	83	76,39	58	21	31	8	288
164 225 00	31 T10/25-2	25	1F	77,75	83	79,58	60	21	31	8	310
164 226 00	31 T10/26-2	26	1F	80,90	87	82,76	60	21	31	8	357
164 227 00	31 T10/27-2	27	1F	84,10	91	85,94	60	21	31	8	364
164 228 00	31 T10/28-2	28	1F	87,25	93	89,13	60	21	31	8	401
164 230 00	31 T10/30-2	30	1F	93,65	97	95,49	60	21	31	8	441
164 232 00	31 T10/32-2	32	1F	100,00	106	101,86	65	21	31	10	493
164 236 00	31 T10/36-2	36	1F	112,75	119	114,59	70	21	31	10	623
164 240 00	31 T10/40-2	40	1F	125,45	131	127,32	80	21	31	10	767
164 244 00	31 T10/44-0	44	2	138,20	-	140,06	88	21	31	10	993
164 248 00	31 T10/48-0	48	2	150,95	-	152,79	95	21	31	16	1090
164 260 00	31 T10/60-0	60	2	189,10	-	190,99	110	21	31	16	1701

### Profile T 10, Timing Belt Width 25 mm

Product No. Timing Belt Width 25 mm	Type	Number of teeth	Type	Outside Ø			ND mm	b mm	L mm	Pilot Hole B mm	Weight g
				Pulley mm	Flange mm	d mm					
164 312 00	40 T10/12-2	12	1F	36,35	42	38,20	28	30	40	6	99
164 314 00	40 T10/14-2	14	1F	42,70	48	44,56	32	30	40	8	134
164 315 00	40 T10/15-2	15	1F	45,90	51	47,75	32	30	40	8	152
164 316 00	40 T10/16-2	16	1F	49,10	54	50,93	35	30	40	8	176
164 318 00	40 T10/18-2	18	1F	55,45	60	57,30	40	30	40	8	224
164 319 00	40 T10/19-2	19	1F	58,65	66	60,48	44	30	40	8	247
164 320 00	40 T10/20-2	20	1F	61,80	66	63,66	46	30	40	8	276
164 322 00	40 T10/22-2	22	1F	68,20	75	70,03	52	30	40	8	337
164 324 00	40 T10/24-2	24	1F	74,55	83	76,39	58	30	40	8	392
164 325 00	40 T10/25-2	25	1F	77,75	83	79,58	60	30	40	8	422
164 326 00	40 T10/26-2	26	1F	80,90	87	82,76	60	30	40	8	477
164 327 00	40 T10/27-2	27	1F	84,10	91	85,94	60	30	40	8	536
164 328 00	40 T10/28-2	28	1F	87,25	93	89,13	60	30	40	8	540
164 330 00	40 T10/30-2	30	1F	93,65	97	95,49	60	30	40	8	640
164 332 00	40 T10/32-2	32	1F	100,00	106	101,86	65	30	40	10	693
164 336 00	40 T10/36-2	36	1F	112,75	119	114,59	70	30	40	10	873
164 340 00	40 T10/40-2	40	1F	125,45	131	127,32	80	30	40	10	1067
164 344 00	40 T10/44-0	44	2	138,20	-	140,06	88	30	40	10	1350
164 348 00	40 T10/48-0	48	2	150,95	-	152,79	95	30	40	16	1516
164 360 00	40 T10/60-0	60	2	189,10	-	190,99	110	30	40	16	2339