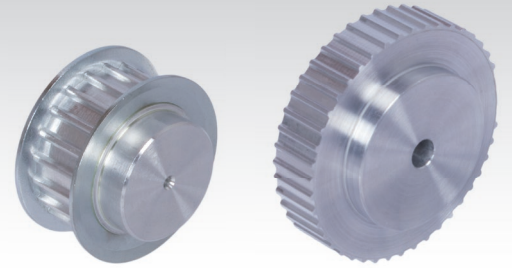
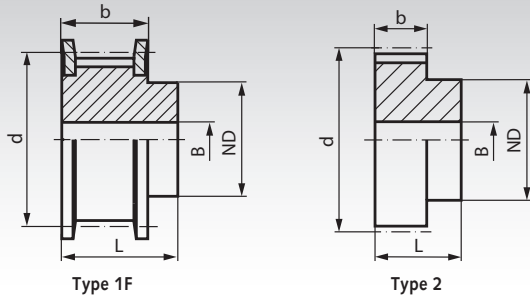


AT Pulleys, Pitch 10 mm Made from Aluminium



Material: Aluminium similar to EN AW2017A. Flanges zinc-plated steel.

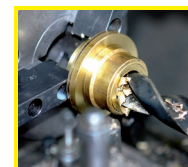
Ordering Details: e.g.: Product No. 168 215 00, Pulley, Pitch AT 10, 15 Teeth, Timing Belt Width 16 mm

Profile AT 10, Timing Belt Width 16 mm

Product No. Timing Belt Width 16 mm	Type	Number of teeth	Type	Outside Ø			ND mm	b mm	L mm	Pilot Hole B mm	Weight g
				Pulley mm	Flange mm	d mm					
168 215 00	31 AT10/15-2	15	1F	45,93	51	47,75	32	21	31	8	116
168 216 00	31 AT10/16-2	16	1F	49,11	54	50,93	35	21	31	8	134
168 218 00	31 AT10/18-2	18	1F	55,48	60	57,30	40	21	31	8	167
168 219 00	31 AT10/19-2	19	1F	58,66	66	60,48	44	21	31	8	184
168 220 00	31 AT10/20-2	20	1F	61,84	66	63,66	46	21	31	8	208
168 222 00	31 AT10/22-2	22	1F	68,21	75	70,03	52	21	31	8	253
168 224 00	31 AT10/24-2	24	1F	74,57	83	76,39	58	21	31	8	288
168 225 00	31 AT10/25-2	25	1F	77,76	83	79,58	60	21	31	8	310
168 226 00	31 AT10/26-2	26	1F	80,94	87	82,76	60	21	31	8	357
168 227 00	31 AT10/27-2	27	1F	84,12	91	85,94	60	21	31	8	364
168 228 00	31 AT10/28-2	28	1F	87,31	93	89,13	60	21	31	8	401
168 230 00	31 AT10/30-2	30	1F	93,67	97	95,49	60	21	31	8	441
168 232 00	31 AT10/32-2	32	1F	100,04	106	101,86	65	21	31	10	493
168 236 00	31 AT10/36-2	36	1F	112,77	119	114,59	70	21	31	10	623
168 240 00	31 AT10/40-2	40	1F	125,50	131	127,32	80	21	31	10	767
168 244 00	31 AT10/44-0	44	2	138,24	-	140,06	88	21	31	10	993
168 248 00	31 AT10/48-0	48	2	150,97	-	152,79	95	21	31	16	1090
168 260 00	31 AT10/60-0	60	2	189,17	-	190,99	110	21	31	16	1701

Profile AT 10, Timing Belt Width 25 mm

Product No. Timing Belt Width 25 mm	Type	Number of teeth	Type	Outside Ø			ND mm	b mm	L mm	Pilot Hole B mm	Weight g
				Pulley mm	Flange mm	d mm					
168 315 00	40 AT10/15-2	15	1F	45,93	51	47,75	32	30	40	8	152
168 316 00	40 AT10/16-2	16	1F	49,11	54	50,93	35	30	40	8	176
168 318 00	40 AT10/18-2	18	1F	55,48	60	57,30	40	30	40	8	224
168 319 00	40 AT10/19-2	19	1F	58,66	66	60,48	44	30	40	8	247
168 320 00	40 AT10/20-2	20	1F	61,84	66	63,66	46	30	40	8	276
168 322 00	40 AT10/22-2	22	1F	68,21	75	70,03	52	30	40	8	337
168 324 00	40 AT10/24-2	24	1F	74,57	83	76,39	58	30	40	8	392
168 325 00	40 AT10/25-2	25	1F	77,76	83	79,58	60	30	40	8	422
168 326 00	40 AT10/26-2	26	1F	80,94	87	82,76	60	30	40	8	477
168 327 00	40 AT10/27-2	27	1F	84,12	91	85,94	60	30	40	8	536
168 328 00	40 AT10/28-2	28	1F	87,31	93	89,13	60	30	40	8	540
168 330 00	40 AT10/30-2	30	1F	93,65	97	95,49	60	30	40	8	640
168 332 00	40 AT10/32-2	32	1F	100,04	106	101,86	65	30	40	10	693
168 336 00	40 AT10/36-2	36	1F	112,77	119	114,59	70	30	40	10	873
168 340 00	40 AT10/40-2	40	1F	125,50	131	127,32	80	30	40	10	1067
168 344 00	40 AT10/44-0	44	2	138,24	-	140,06	88	30	40	10	1350
168 348 00	40 AT10/48-0	48	2	150,97	-	152,79	95	30	40	16	1516
168 360 00	40 AT10/60-0	60	2	189,17	-	190,99	110	30	40	16	2339



**Reworking within
24h-service possible.
Custom made parts
on request.**