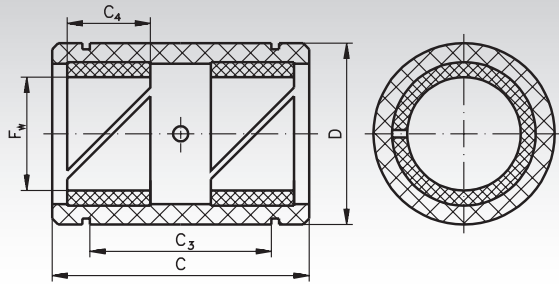


Linear Slide Bearings PO-3 Made from Plastic, ISO Series 3, Closed Design



External dimensions like ISO Series 3 from premium brand in top quality. The sliding material is polyacetal with a specific polyethylene. The linear slide bearings should be specifically chosen if, due to unusual operating conditions, linear bearings cannot be used.

Linear slide bearings feature the same mounting and securing options as the linear bearings of the ISO Series 3 and can be fitted in the same housings.

Tolerances: Mounting hole H6, shaft h6.

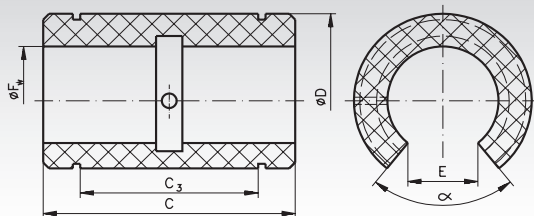
Temperature range: -40°C to +80°C.

Ordering Details: e.g.: Product No. 646 205 00, Linear Slide Bearings PO-3, Internal Ø 5 mm

Product No. Closed	F _w mm	D mm	C mm	C ₃ mm	C ₄ mm	Load Rating dyn. C		Load Rating static C ₀ N	Weight g	Product No. Retaining Ring DIN 471 Page 582	Weight g
						at 0.1m/s N	at 4m/s N				
646 205 00	5	12	22	12	7	280	7	980	3	617 412 00	0,5
646 208 00	8	16	25	14	8	510	13	1800	5	617 416 00	0,8
646 212 00	12	22	32	20	10	965	24	3350	12	617 422 00	1,7
646 216 00	16	26	36	22	12	1530	38	5400	16	617 426 00	2,1
646 220 00	20	32	45	28	15	2400	60	8300	30	617 432 00	3,6
646 225 00	25	40	58	40	20	4000	100	14000	60	617 440 00	6,3
646 230 00	30	47	68	48	23	5500	137	19300	90	617 447 00	7,8
646 240 00	40	62	80	56	25	8000	200	28000	200	617 462 00	14,4
646 250 00	50	75	100	72	30	12000	300	41500	340	617 475 00	21,0

Shaft steel page 466. Shaft blocks page 475.
Precision housings page 481.

Linear Slide Bearings PO-3-0 Made from Plastic, ISO Series 3, Open Design



External dimensions like ISO Series 3 from premium brand in top quality. The sliding material is polyacetal with a specific polyethylene. The linear slide bearings should be specifically chosen if, due to unusual operating conditions, linear bearings cannot be used.

Linear slide bearings feature the same mounting and securing options as the linear bearings of the ISO Series 3 and can be fitted in the same housings.

Tolerances: Mounting hole H6, shaft h6.

Temperature range: -40°C to +80°C.

Ordering Details: e.g.: Product No. 646 212 01, Linear Slide Bearings PO-3-0, Internal Ø 12 mm

Product No. Open	F _w mm	D mm	C mm	C ₃ mm	E mm	α Degrees	Load Rating dyn. C		Load Rating static C ₀ N	Weight g
							at 0.1m/s N	at 4m/s N		
646 212 01	12	22	32	20	7,6	78	965	24	3350	8
646 216 01	16	26	36	22	10,4	78	1530	38	5400	12
646 220 01	20	32	45	28	10,8	60	2400	60	8300	23
646 225 01	25	40	58	40	13,2	60	4000	100	14000	45
646 230 01	30	47	68	48	14,2	50	5500	137	19300	70
646 240 01	40	62	80	56	18,7	50	8000	200	28000	150
646 250 01	50	75	100	72	23,6	50	12000	300	41500	260

Shaft steel with shaft support page 467.
Precision housings page 481.