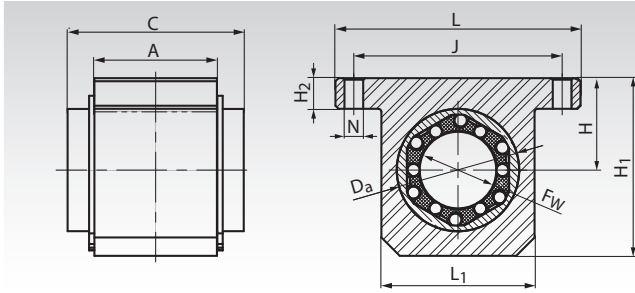


Linear Bearings Units KG-3-K ISO Series 3, Short Version, with Linear Bearing of Closed Design



Material: Housing made from extruded aluminium with a closed linear bearing of the ISO Series 3 from reliable brand in good quality. Self-aligning capability that accommodates tilting.

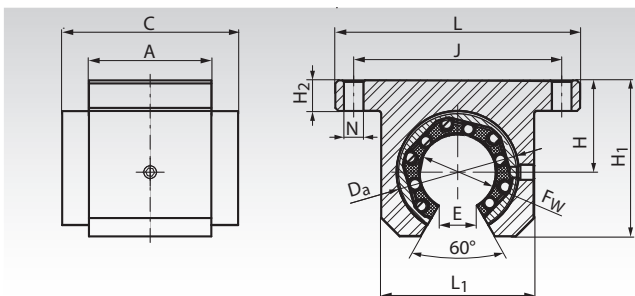
All bearings are lubricated ready-to-install.
Recommended shaft tolerance h6.
Spare linear bearing page 479.

Ordering Details: e.g.: Product No. 646 712 04, Linear Bearings Unit KG-3-K, Short Version, Internal Ø 12 mm

Product No. Closed	F _w mm	A mm	C mm	D _a mm	H _{±0,015} mm	H ₁ mm	H ₂ mm	J mm	L mm	L ₁ mm	N mm	Load Rating		Weight g
												dyn. C N	stat. C ₀ N	
646 712 04	12	20	32	22	18	35	6	42	52	30	5,3	1020	1290	90
646 716 04	16	22	36	26	22	40,5	7	46	56	34	5,3	1250	1550	120
646 720 04	20	28	45	32	25	48	8	58	70	40	6,4	2090	2630	250
646 725 04	25	40	58	40	30	58	10	68	80	50	6,4	3780	4720	490
646 730 04	30	48	68	47	35	67	10	76	88	58	6,4	5470	6810	780
646 740 04	40	56	80	62	45	85	12	94	108	74	8,4	6590	8230	1280
646 750 04	50	72	100	75	50	100	12	116	135	96	10,5	10800	13500	1700

Shaft steel page 466. Shaft blocks page 475.

Linear Bearings Units KG-3-KO ISO Series 3, Short Version, with Linear Bearing of Open Design



Material: Housing made from extruded aluminium with an open linear bearing of the ISO Series 3 from reliable brand in good quality. Self-aligning capability that accommodates tilting.

All bearings are lubricated ready-to-install.
Recommended shaft tolerance h6.
Spare linear bearing page 479.

Ordering Details: e.g.: Product No. 646 712 05, Linear Bearings Unit KG-3-KO, Short Version, Internal Ø 12 mm

Product No. Open	F _w mm	A mm	C mm	D _a mm	H _{±0,015} mm	H ₁ mm	H ₂ mm	J mm	L mm	L ₁ mm	E mm	N mm	Load Rating		Weight g
													dyn. C N	stat. C ₀ N	
646 712 05	12	20	32	22	18	28	6	42	52	30	7,5	5,3	1020	1290	90
646 716 05	16	22	36	26	22	33,5	7	46	56	34	10	5,3	1250	1550	120
646 720 05	20	28	45	32	25	42	8	58	70	40	10	6,4	2090	2630	250
646 725 05	25	40	58	40	30	51	10	68	80	50	12,5	6,4	3780	4720	490
646 730 05	30	48	68	47	35	60	10	76	88	58	12,5	6,4	5470	6810	780
646 740 05	40	56	80	62	45	77	12	94	108	74	16,8	8,4	6590	8230	1280
646 750 05	50	72	100	75	50	93	12	116	135	96	21	10,5	10800	13500	1700

Shaft steel with shaft support page 467.