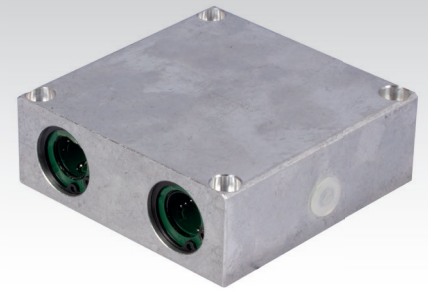
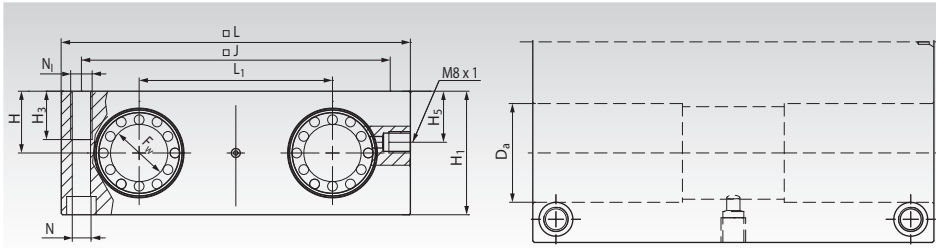


Quadro Linear-Bearing Units KGQ-3 ISO Series 3, Economy-Line, with Linear Bearings of Closed Design



Bottom view, turned

Material: Housing made from extruded aluminium with four closed linear bearings of the ISO Series 3 from reliable brand in good quality at low price. Self-aligning capability that accommodates tilting.

All bearings are lubricated ready-to-install.
Recommended shaft tolerance h6.
Spare linear bearing page 479.

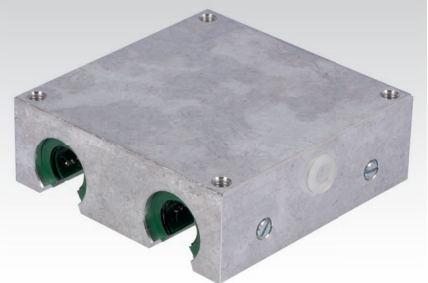
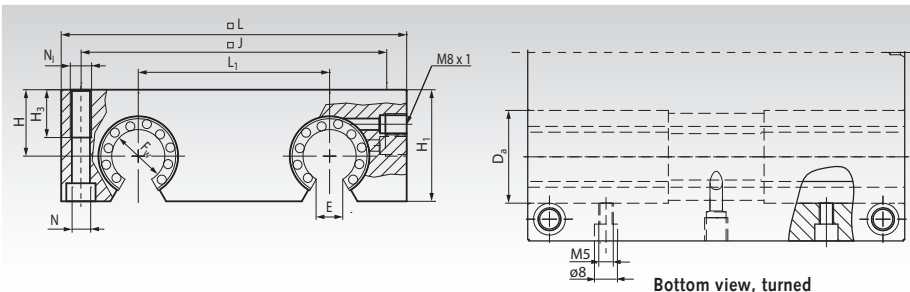
Ordering Details: e.g.: Product No. 646 912 02, Linear Bearings Unit KGQ-3, Economy-Line, Internal Ø 12 mm

Product No. closed	F _w mm	D _a mm	H±0.02 mm	H ₁ mm	H ₃ mm	H ₅ mm	J mm	L mm	L ₁ mm	N mm	N ₁ * mm	Load Rating		Weight g
												dyn. C N	stat. C ₀ N	
646 912 02	12	22	16	32	13	13	73	85	42	5,3	M6	2690	5160	520
646 916 02	16	26	18	36	13	15	88	100	54	5,3	M6	3300	6200	800
646 920 02	20	32	23	46	18	19	115	130	72	6,8	M8	5510	10520	1740
646 925 02	25	40	28	56	22	24	140	160	88	9,0	M10	9980	18880	3190
646 930 02	30	47	32	64	26	27	158	180	96	10,5	M12	14440	27240	4540
646 940 02	40	62	40	80	34	35	202	230	122	13,5	M16	17390	32920	8790
646 950 02	50	75	48	96	34	40	250	280	152	13,5	M16	28510	54000	15520

* When mounting from the bottom side choose the next smaller screw size.

Shaft steel page 466. Shaft blocks page 475.

Quadro Linear-Bearing Units KGQ-3-0 ISO Series 3, Economy-Line, with Linear Bearings of Open Design



Bottom view, turned

Material: Housing made from extruded aluminium with four open linear bearings of the ISO Series 3 from reliable brand in good quality at low price. Self-aligning capability that accommodates tilting.

All bearings are lubricated ready-to-install.
Recommended shaft tolerance h6.
Spare linear bearing page 479.

Ordering Details: e.g.: Product No. 646 912 03, Linear Bearings Unit KGQ-3-0, Economy-Line, Internal Ø 12 mm

Product No. open	F _w mm	D _a mm	H±0.02 mm	H ₁ mm	H ₃ mm	J mm	L mm	L ₁ mm	N mm	N ₁ * mm	E mm	Load Rating		Weight g
												C _{dyn.} N	stat. C ₀ N	
646 912 03	12	22	18	30	13	73	85	42	5,3	M6	6,5	2690	5160	470
646 916 03	16	26	22	35	13	88	100	54	5,3	M6	9,0	3300	6200	740
646 920 03	20	32	25	42	18	115	130	72	6,8	M8	9,0	5510	10520	1540
646 925 03	25	40	30	51	22	140	160	88	9,0	M10	11,5	9980	18880	2790
646 930 03	30	47	35	60	26	158	180	96	10,5	M12	14,0	14440	27240	4140
646 940 03	40	62	45	77	34	202	230	122	13,5	M16	19,5	17690	32920	8290
646 950 03	50	75	55	93	34	250	280	152	13,5	M16	22,5	28510	54000	14870

* When mounting from the bottom side choose the next smaller screw size.

Shaft steel with shaft support and shaft blocks page 467.