

Bevel Gearboxes HUG, Ratio 1:1

General: Miniaturised right-angle drives for light duty. Suitable for manual and short term drive applications.

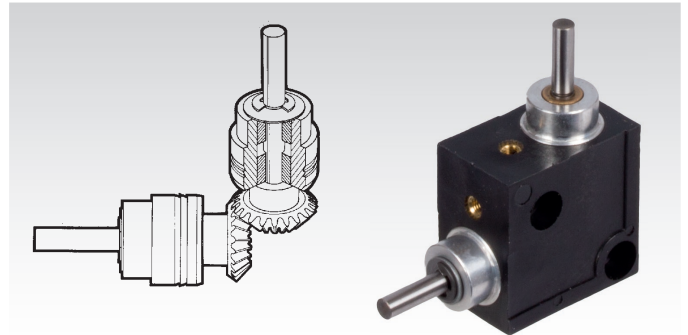
Housing: Gear cases are injection moulded in filled nylon 6.6 for low moisture take up, low thermal expansion, high rigidity. Electrical insulating. Shafts hardened and ground.

Gearing: straight teeth, max. backlash 2°. Speed max. 1,000min⁻¹.

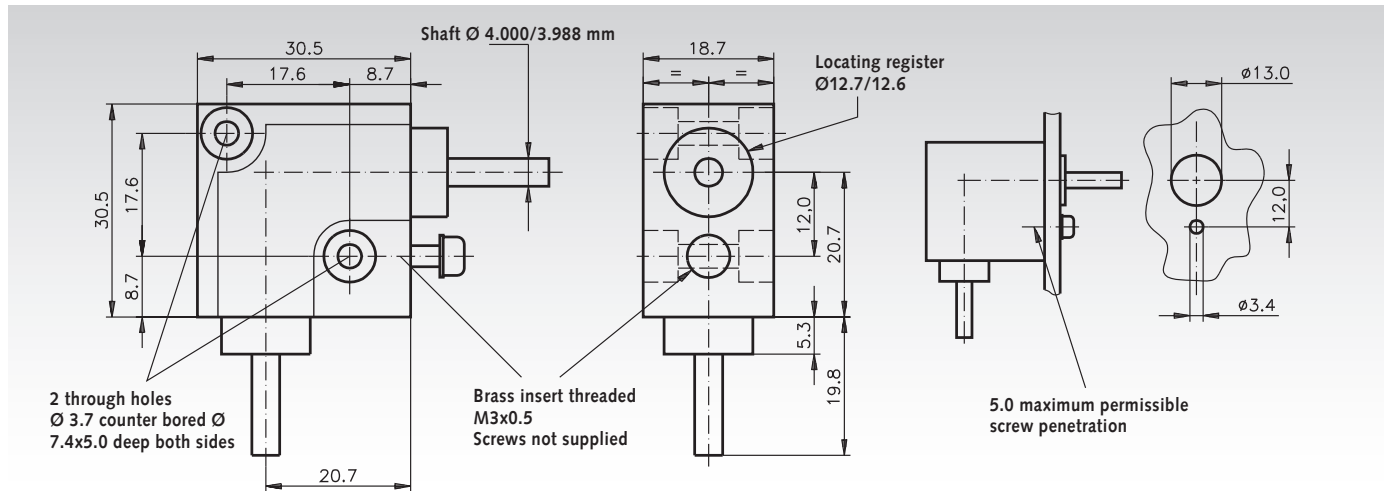
Version A: with steel bevel gears, bonded onto the shafts.

Version B: with polyacetal bevel gears, moulded onto the shafts.

Ordering details: e.g.: Type, Version, Product No.



Product No.	Version	T _{max.} (Ncm)	Weight (g)
410 000 00	A (steel gears)	68	41
410 001 00	B (polyacetal gears)	11	37



Angular Drive with Plastic Bevel Gears, Ratio 1:1

Material: Housing made from zinc die-cast ZnAl4Cu1. Shafts made from stainless steel 1.4301, dismountable. Bevel gears from polyacetal or polyketone resin, injection-moulded.



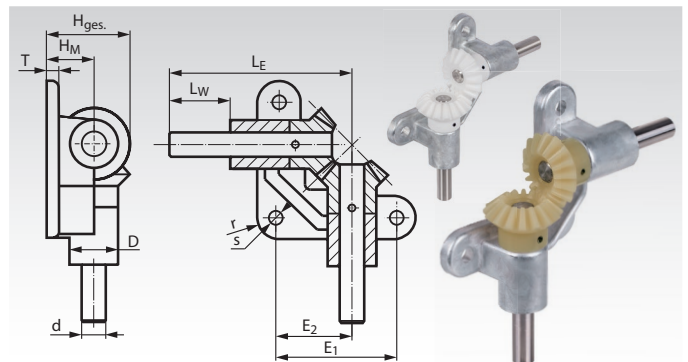
- Low cost angular gear drive, ratio 1:1, 6 sizes.
- Suitable for lower torques and intermittent use.
- Shafts running directly in the self-lubricating housing material.
- Easy to mount and maintenance-free.

Polyacetal: Standard quality with high hardness.

Polyketone: Lower friction, much larger lifespan. Much higher safety against tooth breaking. Shaft angle = 90°. Temperature range -20°C to +100°C.

Ordering details: e.g.:

Art.-Nr. 410 355 10, Angular drive with polyacetal bevel gears, shaft-Ø d=5mm



Product No. Polyacetal	Product No. Polyketone	d mm	D mm	E ₁ mm	E ₂ mm	H _{Ges} mm	H _M mm	L _E mm	L _W mm	r mm	s mm	T mm	Module mm	Number of teeth	T _{max.*}		Weight g
															Polyacetal Ncm	Polyketone Ncm	
410 355 10	410 356 10	5 ^{h9}	12	32	19,4	18,8	10	50	15	6	4,8	4	1,0	16/16	8,3	8,7	60
410 355 15	410 356 15	8 ^{h9}	18	45	28,4	28,2	15	70	20	9	5,8	5	1,5	16/16	29	31	180
410 355 20	410 356 20	10 ^{h6}	22	55	35,0	37,5	20	90	30	11	7,0	6	2,0	16/16	73	77	320
410 355 25	410 356 25	12 ^{h6}	25	65	41,0	46,8	25	105	35	12,5	9,0	7	2,5	16/16	145	152	480
410 355 30	410 356 30	15 ^{h6}	30	75	47,5	56,2	30	120	40	15	9,0	8	3,0	16/16	250	263	760
410 355 35	410 356 35	18 ^{h6}	33	85	54,0	65,7	35	135	45	16	11,0	9	3,5	16/16	440	462	1080