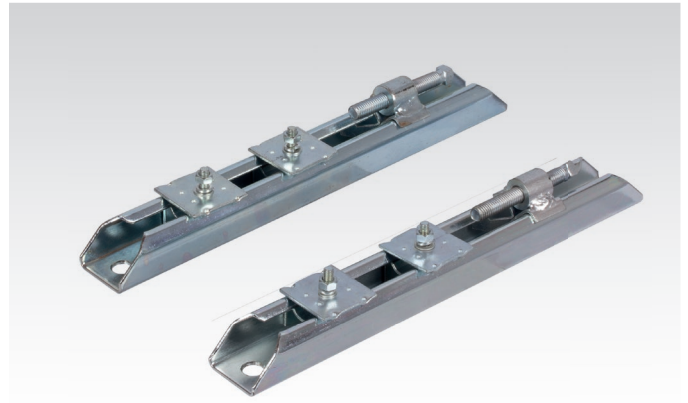
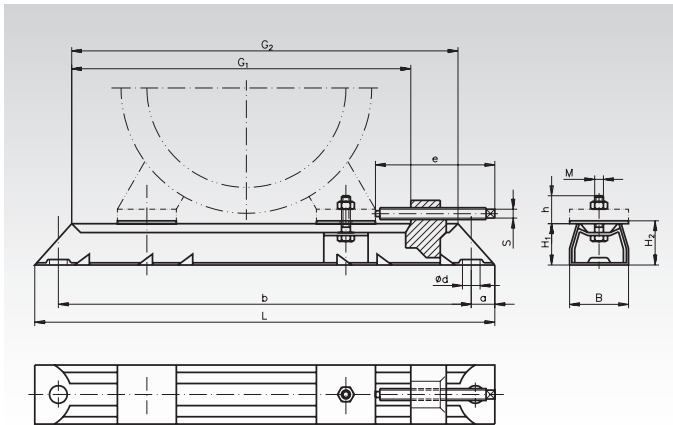


## Motor-Spannschienenensätze aus Stahl SPS mit versetzbaren Spannkloben



Bestellangaben: z.B.: Typenbezeichnung, Gesamtlänge, Artikel-Nr.

Verkauf paarweise: 1 x Artikel-Nr. = 1 Paar

Artikel-Nr. Paar	Gesamtlänge L mm	Gleitlänge G <sub>1</sub> mm	Motor-Baugröße	M x h mm	e x S mm	G <sub>2</sub> mm	a mm	b mm	Ød mm	B mm	H <sub>1</sub> mm	H <sub>2</sub> mm	Gewicht kg
430 180 00	312	240	63/71	M6 x 19	75 x 6	262	16	280	12	40	28	30	1,5
430 182 00	395	302	80/90	M8 x 28	97 x 8	325	20	355	12	50	40	43	3,3
430 184 00	495	405	100/112/132	M10 x 35	97 x 8	425	20	455	12	50	40	43	4,15
430 186 00	630	515	132	M10 x 37	119 x 9	542	25	580	14	60	50	54	8,1

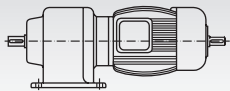
Frequenzumrichter

Seite 744

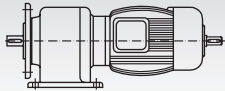


## Bauformen Stirnradtriebmotoren (Die Abb. stellen nur die Bauformen, nicht die Getriebeausführungen dar.)

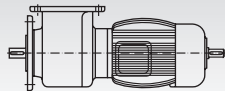
B 3



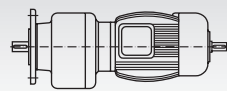
B 3 / B 5



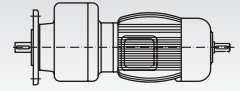
B 8 / B 5



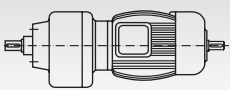
B 5



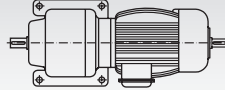
B 5a



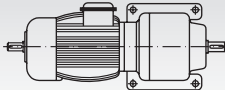
B 5 ohne Flansch



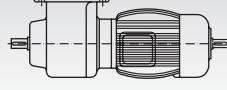
B 6



B 7



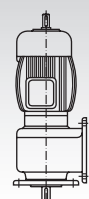
B 8



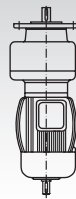
V 1



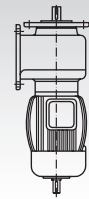
V 1 / V 5



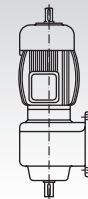
V 3



V 3 / V 6



V 5



V 6

