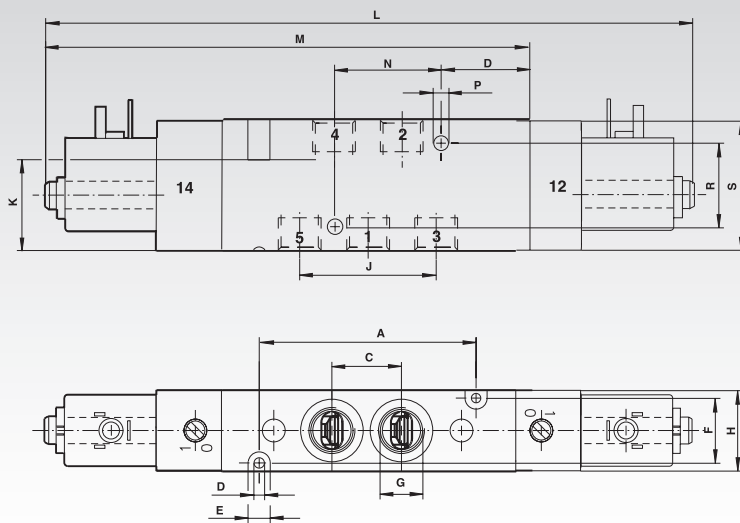


## 5/2 Solenoid Valves, Single and Twin Pilot



Single pilot



Double pilot



### Materials:

Housing and base plates: Aluminium, Spindle: Stainless steel; Piston, spacers and cover: Plastic; Static and dynamic seals: NBR; Screws: zinc-plated; Springs: Stainless Steel.

Standard pilot controls with replaceable solenoid system for all common voltages.

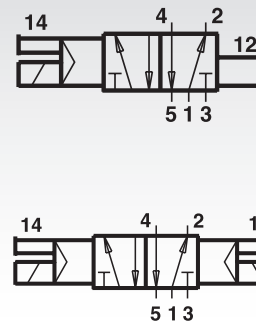
The valves are suitable for lubricated or non-lubricated standard compressed air.

At normal operating conditions the system has a lifespan of 50 million switching cycles.

The valve system (cartridge) is an optimised version of the million-times proven sealing system. Manual override with detent.

Ordering Details: e.g.: Product No. 850 318 11, 5/2 Solenoid Valve, Connecting Thread G 1/8, Voltage 24 V, Single Pilot

Symbol



Product No. single pilot	Product No. twin pilot	Connection	Voltage	Flow (l/min)	Operating pressure (bar)	Weight g	Product No. Socket*	Product No. Spare Solenoid*
850 318 11	850 418 11	G 1/8	24V DC	750	2 - 8	240	858 000 01	858 000 06
850 318 12	850 418 12	G 1/8	230V 50/60Hz	750	2 - 8	240	858 000 01	858 000 07
850 328 11	850 428 11	G 1/4	24V DC	1300	2 - 8	330	858 000 01	858 000 06
850 328 12	850 428 12	G 1/4	230V 50/60Hz	1300	2 - 8	330	858 000 01	858 000 07

\* See page 829.

Dim.	Design	A	B	C	D	E	F	G	H	J	K	L	M	N	O	P	R	S	T	U
G 1/8	Rest Position	50	16	16,2	3,2	6,5	17	G 1/8	22	32,4	28	-	129	25	25	4,5	26	35	-	-
G 1/4	Rest Position	66	1821	3,2	6,5	20	G 1/4	25	42	28	-	150	32	29	4,5	26	40	-	-	-

### Solenoid and Voltage Selection

22 mm solenoid with plug interface according to DIN 43650 Form B.

Voltage: 24V DC.

Solenoid power inrush/holding: 2W.

Voltage: 230V 50/60Hz.

Solenoid power inrush/holding: 6/5VA.