

Standard and Safety Quick-Release Couplings

Standard and safety quick-release couplings ISO 4414, DIN-Standard EN 983. Adaptor profile 7.2 German standard.

The safety locking system of the safety coupling stops the dangerous „whip effect“.

The novel locking system of the coupling offers optimum tightness at low coupling forces. Innovative, patented technology. Perfect performance and safety.



Standard Quick Coupling



Safety Quick Coupling: one pull and the compressed air is dumped. One push and the adaptor is safely disconnected



Standard and Safety Quick-Release Couplings with Internal Thread

Material: Composite material.

Air-flow- \varnothing : 7.2/7.4 mm.

Air flow: 1470 l/min ΔP : 0.6 bar.

1920 l/min ΔP : 1 bar.

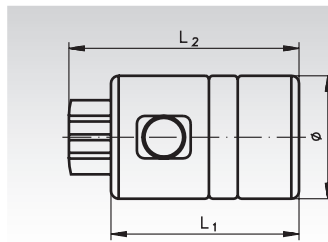
Adaptor profile: NW 7.2 and NW 7.4.

Operating pressure: 2 to 12 bar.

Max. operating pressure: 16 bar.

Temperature range: -15°C to +70°C.

Ordering details: e.g.: Prod.-No., Type, Size



Safety Quick Coupling



Standard Quick Coupling

Product No. Safety Quick Coupling	Product No. Standard Quick Coupling	Connection	L ₁ mm	Ø mm	L ₂ mm	Weight Safety Quick Coupling in g	Weight Standard Quick Coupling in g
870 401 14	870 411 14	G 1/4	49	32	60	73	72
870 401 38	870 411 38	G 3/8	49	32	60	70	65
870 401 12	870 411 12	G 1/2	49	32	70	88	87

Standard and Safety Quick-Release Couplings with Parallel External thread (with PTFE Coating)

Material: Composite material.

Air-flow- \varnothing : 7.2/7.4 mm.

Air flow: 1470 l/min ΔP : 0.6 bar.

1920 l/min ΔP : 1 bar.

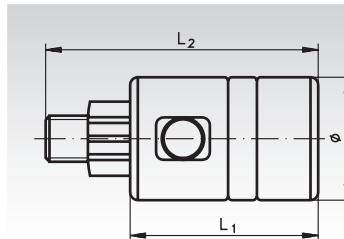
Adaptor profile: NW 7.2 and NW 7.4.

Operating pressure: 2 to 12 bar.

Max. operating pressure: 16 bar.

Temperature range: -15°C to +70°C.

Ordering details: e.g.: Prod.-No., Type, Size



Safety Quick Coupling



Standard Quick Coupling

Product No. Safety Quick Coupling	Product No. Standard Quick Coupling	Connection	L ₁ mm	Ø mm	L ₂ mm	Weight Safety Quick Coupling in g	Weight Standard Quick Coupling in g
870 403 14	870 413 14	G 1/4	49	32	71	89	87
870 403 38	870 413 38	G 3/8	49	32	72	87	86
870 403 12	870 413 12	G 1/2	49	32	75	114	114

Standard and Safety Quick-Release Couplings with Hose Connection

Material: Composite material.

Air-flow- \varnothing : 7.2/7.4 mm.

Air flow: 1470 l/min ΔP : 0.6 bar.

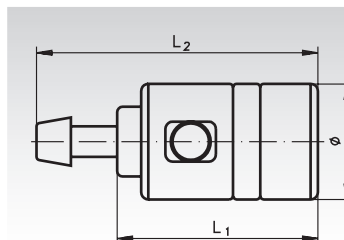
1920 l/min ΔP : 1 bar.

Adaptor profile: NW 7.2 and NW 7.4.

Operating pressure: 2 to 12 bar.

Max. operating pressure: 16 bar.

Temperature range: -15°C to +70°C.



Safety Quick Coupling



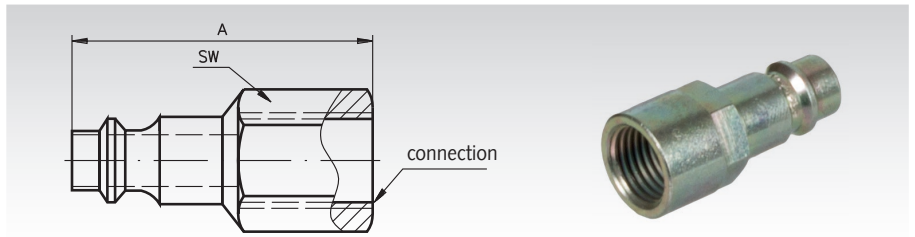
Standard Quick Coupling

Product No. Safety Quick Coupling	Product No. Standard Quick Coupling	Connection mm	L ₁ mm	Ø mm	L ₂ mm	Weight fv Quick Coupling in g	Weight Standard Quick Coupling in g
870 406 01	870 416 01	6 - 7	49	32	78	80	78
870 406 03	870 416 03	8	49	32	78	81	80
870 406 05	870 416 05	9	49	32	78	80	79
870 406 07	870 416 07	9 - 10	49	32	78	83	82
870 406 09	870 416 09	13	49	32	83	92	92

Adaptors for Standard and Safety Quick-Release Couplings

Adaptors with Internal Thread for Standard and Safety Quick-Release Couplings

Material: Carbonated steel, with corrosion- proof treatment.
 Internal diameter: 7.2 mm/7.4 mm.
 Operating pressure: 2 - 12 bar.
 Max. operating pressure: 16 bar.
 Precision: constant dimensions.
 Hardness: wear resistant.

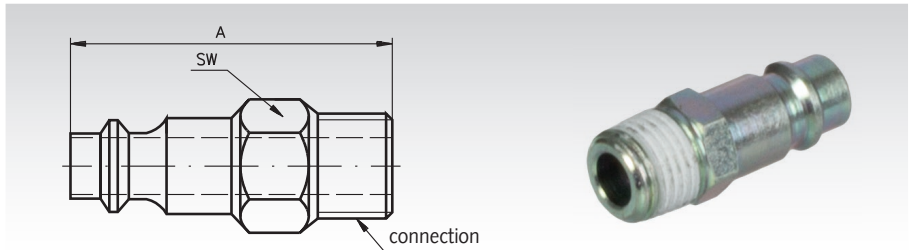


Ordering details: e.g.: Prod.-No., Type, Size

Product No.	Connection	A mm	SW mm	Weight g
870 330 14	G 1/4	40	20	21
870 330 38	G 3/8	42	21	39
870 330 12	G 1/2	46	25	56

Adaptors with External Thread for Standard and Safety Quick-Release Couplings

Material: Carbonated steel, with corrosion- proof treatment.
 Internal diameter: 7.2 mm/7.4 mm.
 Operating pressure: 2 - 12 bar.
 Max. operating pressure: 16 bar.
 Precision: constant dimensions.
 Hardness: wear resistant.

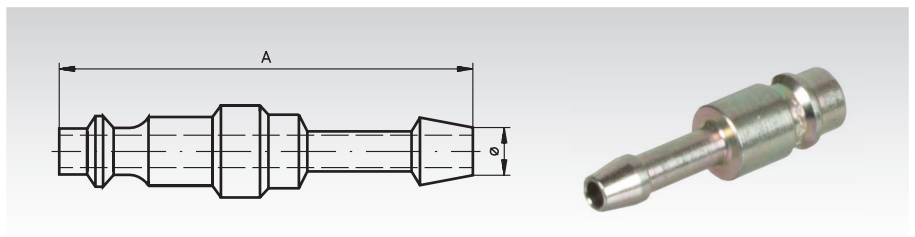


Ordering details: e.g.: Prod.-No., Type, Size

Product No.	Connection	A mm	SW mm	Weight g
870 332 14	G 1/4	35	15	19
870 332 38	G 3/8	41	17	31
870 332 12	G 1/2	49	22	62

Adaptors with Hose Connector for Standard and Safety Quick-Release Couplings

Material: Carbonated steel, with corrosion- proof treatment.
 Internal diameter: 7.2 mm/7.4 mm.
 Operating pressure: 2 - 12 bar.
 Max. operating pressure: 16 bar.
 Precision: constant dimensions.
 Hardness: wear resistant.



Ordering details: e.g.: Prod.-No., Type, Size

Product No.	Connection Ø mm	A mm	Weight g
870 346 00	6	45	14
870 348 00	8	46	17
870 349 00	9	54	25
870 350 00	10	46	19
870 353 00	13	52	26