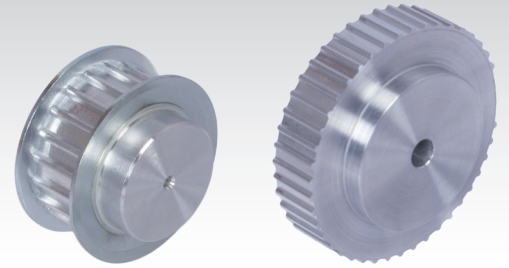
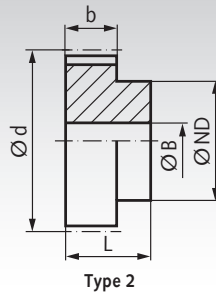
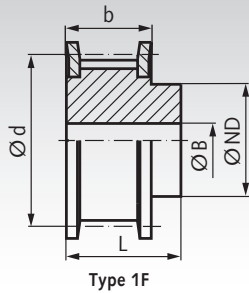


## AT Pulleys, Pitch 5 mm Made from Aluminium



Material: Aluminium similar to EN AW2017A. Flanges zinc-plated steel.

Ordering Details: e.g.: Product No. 166 212 00, Pulley, Pitch AT5, 12 Teeth, Timing Belt Width 10 mm

### Profile AT 5, Timing Belt Width 10 mm

Product No. Belt Width 10 mm	Type	Number of teeth	Type	Outside Ø		d mm	ND mm	b mm	L mm	Pilot Hole B mm	Weight g
				Pulley mm	Flange mm						
166 212 00	21 AT5/12-2	12	1F	17,88	23	19,10	10	15	21	-	16
166 214 00	21 AT5/14-2	14	1F	21,06	25	22,28	13	15	21	-	19
166 215 00	21 AT5/15-2	15	1F	22,65	28	23,87	16	15	21	-	21
166 216 00	21 AT5/16-2	16	1F	24,24	32	25,46	18	15	21	-	25
166 217 00	21 AT5/17-2	17	1F	25,84	32	27,06	18	15	21	-	28
166 218 00	21 AT5/18-2	18	1F	27,43	32	28,65	20	15	21	-	31
166 219 00	21 AT5/19-2	19	1F	29,02	36	30,24	22	15	21	-	36
166 220 00	21 AT5/20-2	20	1F	30,61	36	31,83	23	15	21	-	38
166 222 00	21 AT5/22-2	22	1F	33,79	38	35,01	24	15	21	-	46
166 224 00	21 AT5/24-2	24	1F	36,98	42	38,20	26	15	21	-	54
166 225 00	21 AT5/25-2	25	1F	38,57	44	39,79	26	15	21	-	58
166 226 00	21 AT5/26-2	26	1F	40,16	44	41,38	26	15	21	-	62
166 227 00	21 AT5/27-2	27	1F	41,75	48	42,97	30	15	21	8	64
166 228 00	21 AT5/28-2	28	1F	43,34	48	44,56	32	15	21	8	71
166 230 00	21 AT5/30-2	30	1F	46,53	51	47,75	34	15	21	8	75
166 232 00	21 AT5/32-2	32	1F	49,71	54	50,93	38	15	21	8	88
166 236 00	21 AT5/36-2	36	1F	56,08	63	57,30	38	15	21	8	114
166 240 00	21 AT5/40-2	40	1F	62,44	66	63,66	40	15	21	8	138
166 242 00	21 AT5/42-2	42	1F	65,63	71	66,85	40	15	21	8	180
166 244 00	21 AT5/44-0	44	2	68,81	-	70,03	45	15	21	8	185
166 248 00	21 AT5/48-0	48	2	75,15	-	76,39	50	15	21	8	200
166 260 00	21 AT5/60-0	60	2	94,27	-	95,49	65	15	21	8	307
166 272 00	21 AT5/72-0	72	2	113,37	-	114,59	80	15	21	10	493
166 284 00	21 AT5/84-0	84	2	132,47	-	133,69	80	15	21	10	649
166 296 00	21 AT5/96-0	96	2	151,57	-	152,79	90	15	21	10	847

### Profile AT 5, Timing Belt Width 16 mm

Product No. Belt Width 16 mm	Type	Number of teeth	Type	Outside Ø		d mm	ND mm	b mm	L mm	Pilot Hole B mm	Weight g
				Pulley mm	Flange mm						
166 312 00	27 AT5/12-2	12	1F	17,88	23	19,10	10	21	27	-	22
166 314 00	27 AT5/14-2	14	1F	21,06	25	22,28	13	21	27	-	26
166 315 00	27 AT5/15-2	15	1F	22,65	28	23,87	16	21	27	-	29
166 316 00	27 AT5/16-2	16	1F	24,24	32	25,46	18	21	27	-	35
166 317 00	27 AT5/17-2	17	1F	25,84	32	27,06	18	21	27	-	39
166 318 00	27 AT5/18-2	18	1F	27,43	32	28,65	20	21	27	-	43
166 319 00	27 AT5/19-2	19	1F	29,02	36	30,24	22	21	27	-	49
166 320 00	27 AT5/20-2	20	1F	30,61	36	31,83	23	21	27	-	53
166 322 00	27 AT5/22-2	22	1F	33,79	38	35,01	24	21	27	-	54
166 324 00	27 AT5/24-2	24	1F	36,98	42	38,20	26	21	27	-	76
166 325 00	27 AT5/25-2	25	1F	38,57	44	39,79	26	21	27	-	81
166 326 00	27 AT5/26-2	26	1F	40,16	44	41,38	26	21	27	-	85
166 327 00	27 AT5/27-2	27	1F	41,75	48	42,97	30	21	27	8	90
166 328 00	27 AT5/28-2	28	1F	43,34	48	44,56	32	21	27	8	92
166 330 00	27 AT5/30-2	30	1F	46,53	51	47,75	34	21	27	8	105
166 332 00	27 AT5/32-2	32	1F	49,71	54	50,93	38	21	27	8	123
166 336 00	27 AT5/36-2	36	1F	56,08	63	57,30	38	21	27	8	160
166 340 00	27 AT5/40-2	40	1F	62,44	66	63,66	40	21	27	8	193
166 342 00	27 AT5/42-2	42	1F	65,63	71	66,85	40	21	27	8	205
166 344 00	27 AT5/44-0	44	2	68,81	-	70,03	45	21	27	8	228
166 348 00	27 AT5/48-0	48	2	75,15	-	76,39	50	21	27	8	280
166 360 00	27 AT5/60-0	60	2	94,27	-	95,49	65	21	27	8	430
166 372 00	27 AT5/72-0	72	2	113,37	-	114,59	80	21	27	10	658
166 384 00	27 AT5/84-0	84	2	132,47	-	133,69	80	21	27	10	871
166 396 00	27 AT5/96-0	96	2	151,57	-	152,79	90	21	27	10	1140