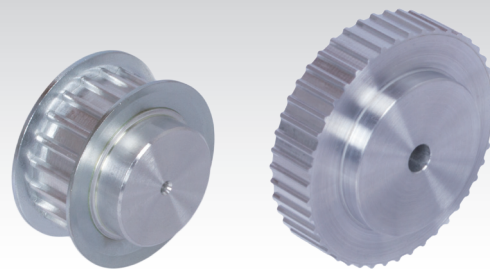
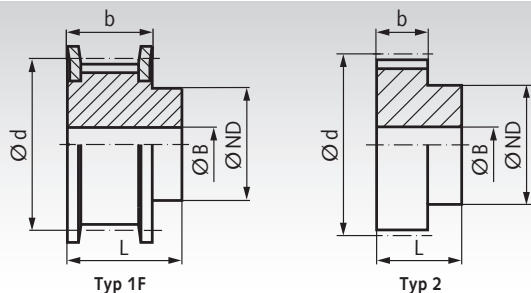


AT Remenice, rozostup 5 mm, vyrobené z hliníka



Materiál: Hliník podľa EN AW2017A. Bočnice z pozinkovanej ocele.

Informácie potrebné na objednanie: napr.: Produkt č. 166 212 00, Remenica, Rozostup AT5, 12 zubov, Šírka rozvodového remeňa 10 mm

Profil AT 5, Šírka rozvodového remeňa 10 mm

Produkt č. Šírka remeňa 10 mm	Typ	Počet zubov	Typ	Vonkajší Ø		d mm	ND mm	b mm	L mm	Ø otvoru		Hmotnosť g
				Remenica mm	Bočnica mm					B mm		
166 212 00	21 AT5/12-2	12	1F	17,88	23	19,10	10	15	21	-	16	
166 214 00	21 AT5/14-2	14	1F	21,06	25	22,28	13	15	21	-	19	
166 215 00	21 AT5/15-2	15	1F	22,65	28	23,87	16	15	21	-	21	
166 216 00	21 AT5/16-2	16	1F	24,24	32	25,46	18	15	21	-	25	
166 217 00	21 AT5/17-2	17	1F	25,84	32	27,06	18	15	21	-	28	
166 218 00	21 AT5/18-2	18	1F	27,43	32	28,65	20	15	21	-	31	
166 219 00	21 AT5/19-2	19	1F	29,02	36	30,24	22	15	21	-	36	
166 220 00	21 AT5/20-2	20	1F	30,61	36	31,83	23	15	21	-	38	
166 222 00	21 AT5/22-2	22	1F	33,79	38	35,01	24	15	21	-	46	
166 224 00	21 AT5/24-2	24	1F	36,98	42	38,20	26	15	21	-	54	
166 225 00	21 AT5/25-2	25	1F	38,57	44	39,79	26	15	21	-	58	
166 226 00	21 AT5/26-2	26	1F	40,16	44	41,38	26	15	21	-	62	
166 227 00	21 AT5/27-2	27	1F	41,75	48	42,97	30	15	21	8	64	
166 228 00	21 AT5/28-2	28	1F	43,34	48	44,56	32	15	21	8	71	
166 230 00	21 AT5/30-2	30	1F	46,53	51	47,75	34	15	21	8	75	
166 232 00	21 AT5/32-2	32	1F	49,71	54	50,93	38	15	21	8	88	
166 236 00	21 AT5/36-2	36	1F	56,08	63	57,30	38	15	21	8	114	
166 240 00	21 AT5/40-2	40	1F	62,44	66	63,66	40	15	21	8	138	
166 242 00	21 AT5/42-2	42	1F	65,63	71	66,85	40	15	21	8	180	
166 244 00	21 AT5/44-0	44	2	68,81	-	70,03	45	15	21	8	185	
166 248 00	21 AT5/48-0	48	2	75,15	-	76,39	50	15	21	8	200	
166 260 00	21 AT5/60-0	60	2	94,27	-	95,49	65	15	21	8	307	
166 272 00	21 AT5/72-0	72	2	113,37	-	114,59	80	15	21	10	493	
166 284 00	21 AT5/84-0	84	2	132,47	-	133,69	80	15	21	10	649	
166 296 00	21 AT5/96-0	96	2	151,57	-	152,79	90	15	21	10	847	

Profil AT 5, Šírka rozvodového remeňa 16 mm

Produkt č. Šírka remeňa 16 mm	Typ	Počet zubov	Typ	Vonkajší Ø		d mm	ND mm	b mm	L mm	Ø otvoru		Hmotnosť g
				Remenica mm	Bočnica mm					B mm		
166 312 00	27 AT5/12-2	12	1F	17,88	23	19,10	10	21	27	-	22	
166 314 00	27 AT5/14-2	14	1F	21,06	25	22,28	13	21	27	-	26	
166 315 00	27 AT5/15-2	15	1F	22,65	28	23,87	16	21	27	-	29	
166 316 00	27 AT5/16-2	16	1F	24,24	32	25,46	18	21	27	-	35	
166 317 00	27 AT5/17-2	17	1F	25,84	32	27,06	18	21	27	-	39	
166 318 00	27 AT5/18-2	18	1F	27,43	32	28,65	20	21	27	-	43	
166 319 00	27 AT5/19-2	19	1F	29,02	36	30,24	22	21	27	-	49	
166 320 00	27 AT5/20-2	20	1F	30,61	36	31,83	23	21	27	-	53	
166 322 00	27 AT5/22-2	22	1F	33,79	38	35,01	24	21	27	-	54	
166 324 00	27 AT5/24-2	24	1F	36,98	42	38,20	26	21	27	-	76	
166 325 00	27 AT5/25-2	25	1F	38,57	44	39,79	26	21	27	-	81	
166 326 00	27 AT5/26-2	26	1F	40,16	44	41,38	26	21	27	-	85	
166 327 00	27 AT5/27-2	27	1F	41,75	48	42,97	30	21	27	8	90	
166 328 00	27 AT5/28-2	28	1F	43,34	48	44,56	32	21	27	8	92	
166 330 00	27 AT5/30-2	30	1F	46,53	51	47,75	34	21	27	8	105	
166 332 00	27 AT5/32-2	32	1F	49,71	54	50,93	38	21	27	8	123	
166 336 00	27 AT5/36-2	36	1F	56,08	63	57,30	38	21	27	8	160	
166 340 00	27 AT5/40-2	40	1F	62,44	66	63,66	40	21	27	8	193	
166 342 00	27 AT5/42-2	42	1F	65,63	71	66,85	40	21	27	8	205	
166 344 00	27 AT5/44-0	44	2	68,81	-	70,03	45	21	27	8	228	
166 348 00	27 AT5/48-0	48	2	75,15	-	76,39	50	21	27	8	280	
166 360 00	27 AT5/60-0	60	2	94,27	-	95,49	65	21	27	8	430	
166 372 00	27 AT5/72-0	72	2	113,37	-	114,59	80	21	27	10	658	
166 384 00	27 AT5/84-0	84	2	132,47	-	133,69	80	21	27	10	871	
166 396 00	27 AT5/96-0	96	2	151,57	-	152,79	90	21	27	10	1140	