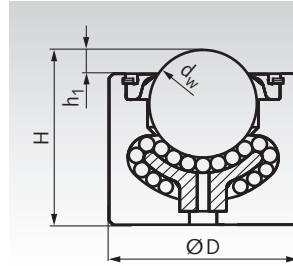


### Ball Transfer Units 370, Solid Steel Housing, plain fit

**Material:** Housing: Steel, with KTL "Anti-Oxide" electrophoretic coating.  
 Ball cup: Steel, case hardened.  
 Balls: Steel 100Cr6, hardened.

Heavy duty ball transfer unit for high load.  
 High shock resistance. Very low friction.  
 Orientation: Anyway.  
 From size 25.4 with felt seal. With drain hole.  
 Conveying speed max. 2m/sec.  
 Temperature range -30°C to +160°C.



Ordering Details: e.g.: Product No. 654 370 12, Ball Transfer Unit 370 Size 12

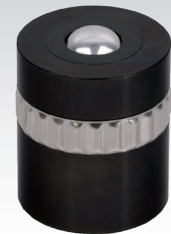
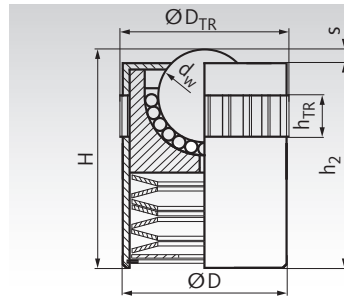
Product No. Type 370	Size dw mm	Load Rating N	D mm	H mm	h <sub>1</sub> mm	Weight kg
654 370 12	12,7	500	20,0	20,0	3,8	0,04
654 370 13	12,7	500	22,2	22,2	3,8	0,05
654 370 25	25,4	2250	44,5	41,3	7,1	0,39
654 370 26	25,4	3850	50,8	44,5	6,4	0,53
654 370 38	38,1	11000	60,3	60,3	12,7	1,00

Other sizes and versions on request.

### Ball Transfer Units 374, Solid Steel Housing, plain fit, with Tolerance Ring, Spring Loaded

**Material:** Housing: Steel, black oxide finish. Inside this sleeve, there is a zinc-plated ball cup.  
 Ball cup: Steel, case hardened.  
 Balls: Steel 100Cr6, hardened.

Medium duty ball transfer unit for medium high load, spring-loaded. Orientation: Ball up or horizontal. Shock loads may be higher than the stated load range. At force  $F_{s \max}$  the end of spring travel is reached. With drain hole.  
 Conveying speed max. 1.5m/sec.  
 Temperature range -30°C to +100°C.



Ordering Details: e.g.: Product No. 654 374 12, Ball Transfer Unit 374 Size 12.7

Product No. Type 374	Size dw mm	Load Rating N	$F_{s \max}$ N	D mm	$D_{TR}^*$ mm	H mm	H <sub>2</sub> mm	h <sub>TR</sub> mm	s mm	Weight kg
654 374 12	12,7	400	900	23,9	24,5	30	28,5	10,5	1,5	0,070
654 374 15	15,8	600	1100	29,9	30,5	36	34,5	10,5	1,5	0,130
654 374 25	25,4	1000	1750	39,8	40,5	48	46,5	10,5	1,5	0,320
654 374 30	30	3350	5850	49,9	50,5	60	58,5	12,3	1,5	0,650

\* Bore size. Recommended bore tolerance: H9.

Other sizes and versions on request.

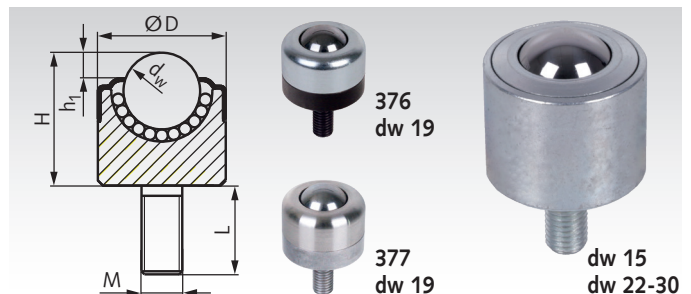
### Ball Transfer Units 376 / 377, Solid Steel Housing, plain fit, with Threaded Stud

**Material Type 376:** Housing: Steel, zinc-plated.  
 Ball cup: Steel, case hardened.  
 Balls: Steel 100Cr6, hardened.

**Material Type 377:** Stainless steel 1.4021.



Medium duty ball transfer unit for medium high load.  
 Orientation: Ball up or horizontal. From size 22 with felt seal.  
 Without drain hole.  
 Conveying speed max. 1.5m/sec.  
 Temperature range -30°C to +100°C.



Ordering Details: e.g.: Product No. 654 376 15, Ball Transfer Unit 376 Size 15

Product No. Type 376	Product No. Type 377	Size dw mm	Load Rating N	D mm	H mm	h <sub>1</sub> mm	L mm	M mm	Weight kg
654 376 15	-	15	600	25	26	5,0	20,0	M8x1,25	0,083
654 376 19	654 377 19	19	750	30	26	4,8	20,5	M8x1,25	0,106
654 376 22	654 377 22	22	1800	36	37,5	4,5	25,4	M12x1,75	0,256
654 376 30	-	30	3500	45	43,8	6,5	25,4	M12x1,75	0,44

Other sizes and versions on request.

**Note:** Due to unevenness of the running surface, there are often only three rollers carrying the weight. Therefore the chosen load rating should equal at least one third of the load. Max. distance of ball transfer units = edge length of the object divided by 2.5.