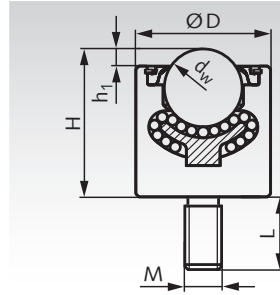


## Ball Transfer Units 378, Solid Steel Housing, plain fit, with Threaded Stud

**Material:** Housing: Steel, with KTL "Anti-Oxide" electrophoretic coating.  
Ball cup: Steel, case hardened.  
Balls: Steel 100Cr6, hardened.

Heavy duty ball transfer unit for high load.  
High shock resistance. Very low friction.  
Orientation: Anyway.  
From size 25.4 with felt seal. Without drain hole.  
Conveying speed max. 2m/sec.  
Temperature range -30°C to +160°C.



*Other sizes and versions on request.*

Ordering Details: e.g.: Product No. 654 378 12, Ball Transfer Unit 378 Size 12.7

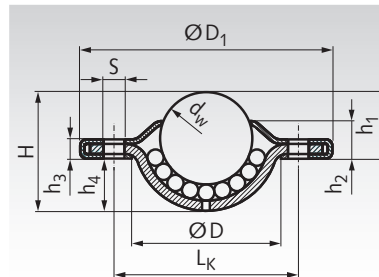
Product No. Type 378	Size dw mm	Load Rating N	D mm	H mm	h <sub>1</sub> mm	L mm	M mm	Weight kg
654 378 12	12,7	500	20	19,1	3,8	16,1	M8x1,25	0,04
654 378 13	12,7	500	20,6	19,1	3,8	28,7	M8x1,25	0,04
654 378 25	25,4	2250	44	48,3	5,6	25	M12x1,75	0,49
654 378 26	25,4	3850	50	51,3	6,4	25	M12x1,75	0,63
654 378 38	38,1	11000	60	73,5	12,7	40	M20x2,5	1,34

## Ball Transfer Units 380 / 383, Top Flange mounted, without Cup

**Material Type 380:** Housing: Steel, zinc-plated.  
Ball cup: Steel.  
Balls: Steel, hardened.

**Material Type 383:** Stainless steel.

Light duty ball transfer unit for low load.  
Orientation: Ball up or horizontal. From size 19 with felt seal and drain hole. Size 32 stainless is without felt seal.  
Conveying speed max. 1m/sec.  
Temperature range -20°C to +70°C.



*Other sizes and versions on request.*

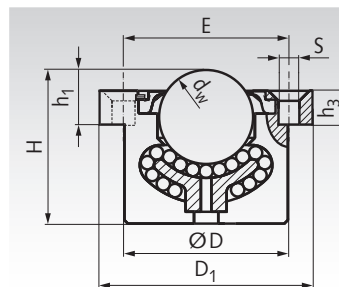
Ordering Details: e.g.: Product No. 654 380 15, Ball Transfer Unit 380 Size 15

Product No. Type 380	Product No. Type 383	Size dw mm	Load Rating N	D mm	D <sub>1</sub> mm	H mm	h <sub>1</sub> mm	h <sub>2</sub> mm	h <sub>3</sub> mm	h <sub>4</sub> mm	L <sub>k</sub> mm	S mm	Weight kg
654 380 15	-	15	150	24	41	19,3	10,8	5,8	3,2	8,5	30	2 x 3,4	0,045
654 380 19	654 383 19	19	250	29,1	61	22	10,0	6,8	3,2	12,0	44,5	2 x 5,1	0,090
654 380 23	-	23	1200	33	45	27,7	9,8	3,6	3,6	17,9	39	3 x 3,5	0,096
654 380 25	-	25	600	36	56	30	14,6	6,8	3,3	15,4	45	2 x 4,0	0,125
654 380 32	654 383 32	32	1250	45,5	73,7	36,1	16,2	8,2	4,2	19,9	58,7	2 x 5,1	0,269

## Ball Transfer Units 384, Top Flange mounted, Solid Steel Housing

**Material:** Housing: Steel, with KTL "Anti-Oxide" electrophoretic coating.  
Ball cup: Steel, case hardened.  
Balls: Steel 100Cr6, hardened.

Heavy duty ball transfer unit for high load.  
High shock resistance. Very low friction.  
Orientation: Anyway.  
From size 25.4 with felt seal. With drain hole.  
Conveying speed max. 2m/sec.  
Temperature range -30°C to +160°C.



*Other sizes and versions on request.*

Ordering Details: e.g.: Product No. 654 384 12, Ball Transfer Unit 384 Size 12.7

Product No. Type 384	Size dw mm	Load Rating N	D mm	D <sub>1</sub> mm	E mm	H mm	h <sub>1</sub> mm	h <sub>3</sub> mm	S mm	Qty. S	Weight kg
654 384 12	12,7	500	23,8	47,7 x 32 <sup>1)</sup>	34,9	22,2	7,9	2,0	4,0 <sup>2)</sup>	2	0,06
654 384 25	25,4	2250	44,5	57,2	44,5	41,3	11,9	4,8	6,1	4	0,44
654 384 26	25,4	3850	50	76,2	57,9	44,5	12,7	6,4	8,1	4	0,70
654 384 38	38,1	11000	60	76,2	57,9	60	25,4	12,7	8,1	4	1,20

<sup>1)</sup> Elliptical flange with 2 bores. <sup>2)</sup> Not countersunk.

**Note:** Due to unevenness of the running surface, there are often only three rollers carrying the weight. Therefore the chosen load rating should equal at least one third of the load. Max. distance of ball transfer units = edge length of the object divided by 2.5.