

Cardan Adapter KARA

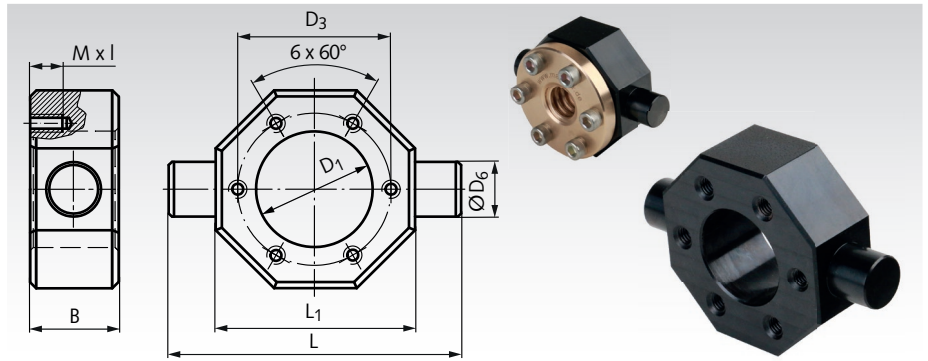
Material: Steel, black oxide finish.

Strength min. 350 N/mm².

Cardan adapter for cardanical mounting of trapezoidal threaded flange nuts.

The flange nut has to be screwed to the adapter.

For **MÄDLER**[®] flange nuts, you can find the fitting adapter by comparing the diameter D_1 . For flange nuts from other manufacturers, please match the dimensions D_1 and D_3 to select the correct adapter.



Ordering Details: e.g.: Product No. 644 701 25,
Cardan adapter KARA-25

Product No.	Type	D_1 ^{G7} mm	D_3 ^{±0,1} mm	D_6 ^{f8} mm	L mm	L_1 mm	B mm	M x l mm	Weight kg
644 701 25	KARA-25	25	35	12	70	50	20	M5 x 10	0,26
644 701 26	KARA-26	26	38	12	70	50	20	M5 x 10	0,25
644 701 28	KARA-28	28	38	12	70	50	20	M5 x 10	0,24
644 701 30	KARA-30	30	45	16	87	60	25	M6 x 12	0,48
644 701 32	KARA-32	32	45	16	85	58	25	M6 x 12	0,42
644 701 38	KARA-38	38	50	18	95	65	25	M6 x 12	0,51
644 701 40	KARA-40	40	58	18	105	75	25	M6 x 12	0,72
644 701 45*	KARA-45	45	58/65	20	115	80	30	M6 x 12	0,94
644 701 50**	KARA-50	50	68/65	25	125	85	30	M6/M8 x 12	1,07
644 701 55	KARA-55	55	85	25	165	115	30	M6 x 12	2,21
644 701 60	KARA-60	60	95	30	175	135	40	M8 x 15	4,06
644 701 63	KARA-63	63	78	30	140	100	40	M8 x 15	1,83
644 701 72	KARA-72	72	90	40	165	115	50	M10 x 16	3,17
644 701 80	KARA-80	80	120	40	215	165	50	M10 x 16	7,36
644 701 85	KARA-85	85	105	40	180	130	50	M10 x 16	3,74
644 701 95***	KARA-95	95	130/140	45	245	185	50	M12/M16 x 20	8,89

* With 2 different drilling patterns on front and back side. ** With 2 different drilling patterns on front and back side. $D_3=65$ mm with M8 x 12.

*** With 2 different drilling patterns on front and back side. $D_3=140$ mm with M16 x 20. The drill pattern on the backside is 30° displaced to the frontside.

Adapter Console KONA

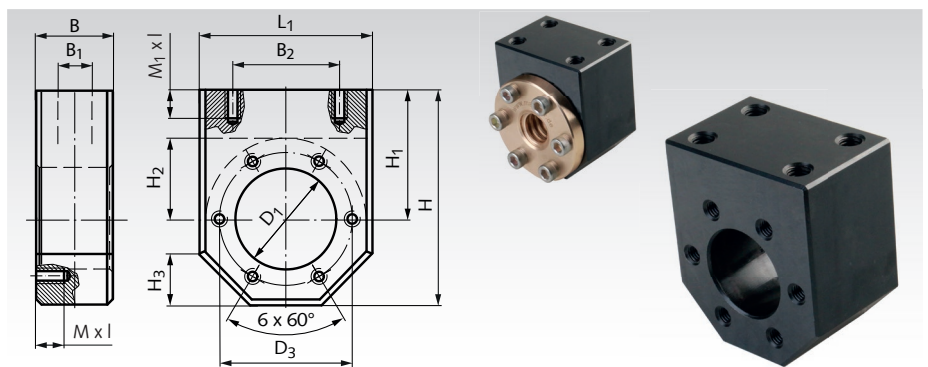
Material: Steel, black oxide finish.

Strength min. 350 N/mm².

KONA adapter bracket for radial fastening of trapezoidal threaded flange nuts.

The flange nut has to be screwed to the adapter.

For **MÄDLER**[®] flange nuts, you can find the fitting adapter by comparing the diameter D_1 . For flange nuts from other manufacturers, please match the dimensions D_1 and D_3 to select the correct adapter.



Ordering Details: e.g.: Product No. 644 702 25,
Adapter console KONA-25

Product No.	Type	D_1 ^{G7} mm	D_3 ^{±0,1} mm	L_1 mm	B mm	B_1 mm	B_2 mm	H mm	H_1 mm	H_2 mm	H_3 mm	M x l mm	M_1 x l mm	Weight kg
644 702 25	KONA-25	25	35	50	40	24	34	60	35	22,5	15	M5 x 10	M8 x 15	0,70
644 702 26	KONA-26	26	38	50	40	24	34	60	35	24	15	M5 x 10	M8 x 15	0,68
644 702 28	KONA-28	28	38	50	40	24	34	60	35	24	15	M5 x 10	M8 x 15	0,66
644 702 30	KONA-30	30	45	60	40	24	40	69	39	29	17	M6 x 12	M8 x 15	0,96
644 702 32	KONA-32	32	45	58	40	24	39	68	37,5	27,5	19	M6 x 12	M8 x 15	0,85
644 702 38	KONA-38	38	50	65	40	24	49	75	42,5	31	19	M6 x 12	M10 x 15	1,03
644 702 40	KONA-40	40	58	75	40	24	54	85	47,5	36	22	M6 x 12	M10 x 15	1,42
644 702 45*	KONA-45	45	58/65	80	50	30	54	89	49	39	23	M6 x 12	M10 x 15	1,92
644 702 50**	KONA-50	50	68/65	85	50	30	60	92	50	41	24	M6/M8 x 15	M12 x 15	2,01
644 702 55	KONA-55	55	85	115	50	30	60	125	67,5	55	33	M6 x 12	M12 x 15	4,25
644 702 60	KONA-60	60	95	135	65	41	100	155	87,5	65	39	M8 x 15	M14 x 25	8,38
644 702 63	KONA-63	63	78	100	65	41	76	120	70	47,5	29	M8 x 15	M14 x 25	4,02
644 702 72	KONA-72	72	90	115	88	64	91	135	77,5	55	34	M10 x 16	M16 x 25	7,00
644 702 80	KONA-80	80	120	165	88	64	130	187,5	105	80	47	M10 x 16	M16 x 30	16,27
644 702 85	KONA-85	85	105	130	88	64	101	152	87,5	62,5	39	M10 x 16	M16 x 30	8,56
644 702 95***	KONA-95	95	130/140	185	88	64	135	207,5	115	90	53	M12/M16 x 25	M16 x 30	19,38

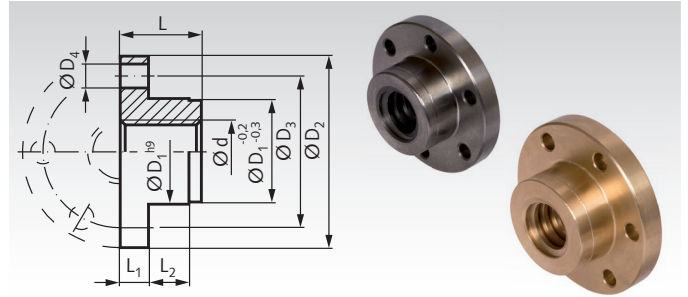
* With 2 different drilling patterns on front and back side. ** With 2 different drilling patterns on front and back side. $D_3=65$ mm with M8 x 15.

*** With 2 different drilling patterns on front and back side. $D_3=140$ mm with M16 x 25.

The drill pattern on the backside is 30° displaced to the frontside.

Ready-to-Install Flange Nuts with Metric ISO-Trapezoidal Thread DIN 103, Single-Thread, Right Hand

Material: Grey cast iron GG25.
Red brass Rg7 (CuSn7Zn4Pb7-C).
Single thread, right hand.
Tolerance zone 7H.



Ordering Details: e.g.: Product No. 644 770 16, flange nut made from GG25,
Tr. 16 x 4, single thread, right hand

Single thread, right hand

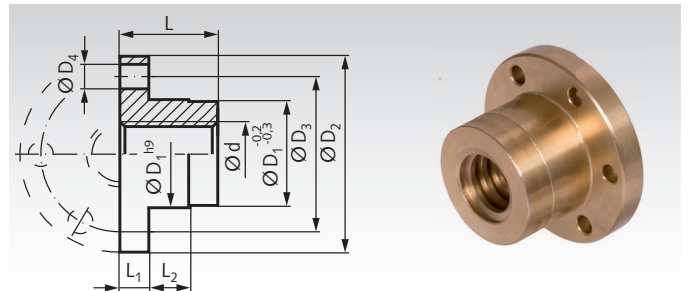
Product No. Grey Cast Right Hand	Product No. Red Brass Right Hand	Tr. Thread Ød mm	D ₁ mm	DIN ISO 2768 m						Weight		Accessories (order separately)*	
				D ₂ mm	D ₃ mm	6 x D ₄ mm	L mm	L ₁ mm	L ₂ mm	Grey Cast kg	Red Brass kg	Product No. adapter KARA	Product No. adapter KONA
644 770 16	644 771 16	16 x 4	26	48	38	6	20	7	10	0,12	0,13	644 701 26	644 702 26
-	644 771 18	18 x 4	30	58	45	7	22	8	12	-	0,22	644 701 30	644 702 30
644 770 20	644 771 20	20 x 4	30	58	45	7	22	8	12	0,17	0,20	644 701 30	644 702 30
644 770 24	644 771 24	24 x 5	40	72	58	7	28	10	12	0,36	0,42	644 701 40	644 702 40
-	644 771 28	28 x 5	45	78	65	7	35	10	15	-	0,59	644 701 45	644 702 45
644 770 30	644 771 30	30 x 6	50	82	68	7	44	12	15	0,85	0,95	644 701 50	644 702 50
644 770 36	644 771 36	36 x 6	55	110	85	7	55	15	15	1,45	1,60	644 701 55	644 702 55
644 770 40	644 771 40	40 x 7	60	130	95	9	60	15	20	2,00	2,18	644 701 60	644 702 60
644 770 50	644 771 50	50 x 8	80	160	120	11	65	15	20	3,25	3,68	644 701 80	644 702 80
644 770 60	644 771 60	60 x 9	80	160	120	11	65	15	20	2,95	3,26	644 701 80	644 702 80
-	644 771 70	70 x 10	95	160	130	12,5	75	22	20	-	4,85	644 701 95	644 702 95

* Adapter see page 518.
Comparison of friction coefficients see page 514.



Ready-to-Install Flange Nuts EFM with Metric ISO-Trapezoidal Thread DIN 103, Single-Thread, Right Hand

Material: Red brass Rg7 (CuSn7Zn4Pb7-C).
Single thread, right hand.
Tolerance zone 7H.



Ordering Details: e.g.: Product No. 644 775 12, flange nut EFM,
Tr. 12 x 3, single thread, right hand

Single thread, right hand

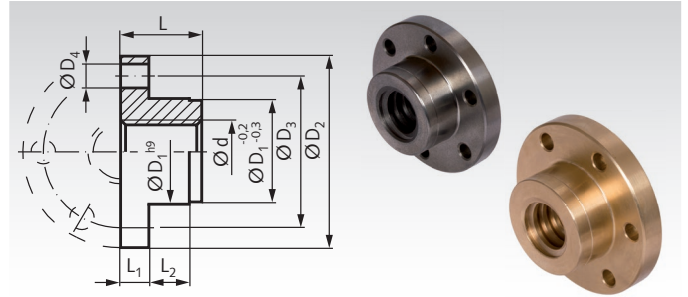
Product No. Red Brass Right Hand	Tr. Thread Ød mm	D ₁ mm	DIN ISO 2768 m						Weight kg	Accessories (order separately)*	
			D ₂ mm	D ₃ mm	6 x D ₄ mm	L mm	L ₁ mm	L ₂ mm		Product No. adapter KARA	Product No. adapter KONA
644 775 12	12 x 3	28	48	38	6	28	12	8	0,24	644 701 28	644 702 28
644 775 14	14 x 4**	28	48	38	6	35	12	8	0,28	644 701 28	644 702 28
644 775 16	16 x 4	28	48	38	6	44	12	8	0,28	644 701 28	644 702 28
644 775 18	18 x 4	28	48	38	6	44	12	8	0,26	644 701 28	644 702 28
644 775 20	20 x 4	32	55	45	7	44	12	8	0,35	644 701 32	644 702 32
644 775 24	24 x 5	32	55	45	7	44	12	8	0,30	644 701 32	644 702 32
644 775 28	28 x 5	38	62	50	7	46	14	8	0,42	644 701 38	644 702 38
644 775 30	30 x 6	38	62	50	7	46	14	8	0,42	644 701 38	644 702 38
644 775 32	32 x 6	38	62	50	7	46	14	8	0,38	644 701 38	644 702 38
644 775 36	36 x 6	45	70	58	7	59	16	10	0,64	644 701 45	644 702 45
644 775 40	40 x 7	63	95	78	9	73	16	10	1,82	644 701 63	644 702 63
644 775 44	44 x 7	63	95	78	9	73	16	10	1,82	644 701 63	644 702 63
644 775 48	48 x 8	72	110	90	11	97	18	10	2,80	644 701 72	644 702 72
644 775 50	50 x 8	72	110	90	11	97	18	10	2,80	644 701 72	644 702 72
644 775 52	52 x 8	72	110	90	11	97	18	10	2,80	644 701 72	644 702 72
644 775 60	60 x 9	85	125	105	11	99	20	10	3,85	644 701 85	644 702 85
644 775 70	70 x 10	95	180	140	17	100	30	16	7,80	644 701 95	644 702 95

* Adapter see page 518.
** Lead angle is not in accordance with DIN 103.
Comparison of friction coefficients see page 514.



Ready-to-Install Flange Nuts with Metric ISO-Trapezoidal Thread DIN 103, Single-Thread, Left Hand

Material: Grey cast iron GG25.
Red brass Rg7 (CuSn7Zn4Pb7-C).
Single thread, left hand.
Tolerance zone 7H.



Ordering Details: e.g.: Product No. 644 773 16, flange nut made from GG25,
Tr. 16 x 4, single thread, left hand

Single thread, left hand

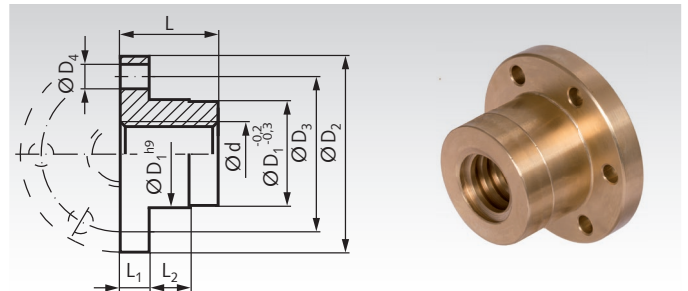
Product No. Grey Cast Left Hand	Product No. Red Brass Left Hand	Tr. Thread Ød mm	D ₁ mm	DIN ISO 2768 m						Weight		Accessories (order separately)*	
				D ₂ mm	D ₃ mm	6 x D ₄ mm	L mm	L ₁ mm	L ₂ mm	Grey Cast kg	Red Brass kg	Product No. adapter KARA	Product No. adapter KONA
644 773 16	644 774 16	16 x 4	26	48	38	6	20	7	10	0,12	0,13	644 701 26	644 702 26
-	644 774 18	18 x 4	30	58	45	7	22	8	12	-	0,22	644 701 30	644 702 30
644 773 20	644 774 20	20 x 4	30	58	45	7	22	8	12	0,17	0,20	644 701 30	644 702 30
644 773 24	644 774 24	24 x 5	40	72	58	7	28	10	12	0,36	0,42	644 701 40	644 702 40
-	644 774 28	28 x 5	45	78	65	7	35	10	15	-	0,59	644 701 45	644 702 45
644 773 30	644 774 30	30 x 6	50	82	68	7	44	12	15	0,85	0,95	644 701 50	644 702 50
644 773 36	644 774 36	36 x 6	55	110	85	7	55	15	15	1,45	1,60	644 701 55	644 702 55
644 773 40	644 774 40	40 x 7	60	130	95	9	60	15	20	2,00	2,18	644 701 60	644 702 60
644 773 50	644 774 50	50 x 8	80	160	120	11	65	15	20	3,25	3,68	644 701 80	644 702 80
644 773 60	644 774 60	60 x 9	80	160	120	11	65	15	20	2,95	3,26	644 701 80	644 702 80
-	644 774 70	70 x 10	95	160	130	12,5	75	22	20	-	4,85	644 701 95	644 702 95

* Adapter see page 518.
Comparison of friction coefficients see page 514.



Ready-to-Install Flange Nuts EFM with Metric ISO-Trapezoidal Thread DIN 103, Single-Thread, Left Hand

Material: Red brass Rg7 (CuSn7Zn4Pb7-C).
Single thread, left hand.
Tolerance zone 7H.



Ordering Details: e.g.: Product No. 644 776 12, flange nut EFM,
Tr. 12 x 3, single thread, left hand

Single thread, left hand

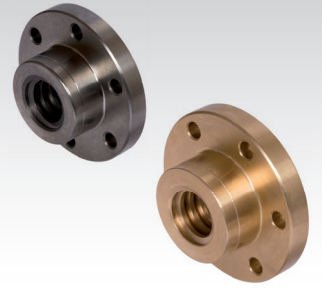
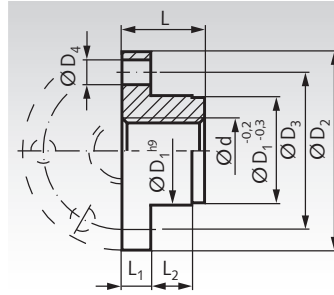
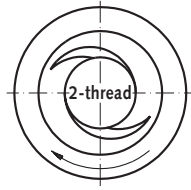
Product No. Red Brass Left Hand	Tr. Thread Ød mm	D ₁ mm	D ₂ mm	D ₃ mm	DIN ISO 2768 m				Weight kg	Accessories (order separately)*	
					6 x D ₄ mm	L mm	L ₁ mm	L ₂ mm		Product No. adapter KARA	Product No. adapter KONA
644 776 12	12 x 3	28	48	38	6	28	12	8	0,24	644 701 28	644 702 28
644 776 14	14 x 4**	28	48	38	6	35	12	8	0,28	644 701 28	644 702 28
644 776 16	16 x 4	28	48	38	6	44	12	8	0,28	644 701 28	644 702 28
644 776 18	18 x 4	28	48	38	6	44	12	8	0,26	644 701 28	644 702 28
644 776 20	20 x 4	32	55	45	7	44	12	8	0,35	644 701 32	644 702 32
644 776 24	24 x 5	32	55	45	7	44	12	8	0,30	644 701 32	644 702 32
644 776 28	28 x 5	38	62	50	7	46	14	8	0,42	644 701 38	644 702 38
644 776 30	30 x 6	38	62	50	7	46	14	8	0,42	644 701 38	644 702 38
644 776 32	32 x 6	38	62	50	7	46	14	8	0,38	644 701 38	644 702 38
644 776 36	36 x 6	45	70	58	7	59	16	10	0,64	644 701 45	644 702 45
644 776 40	40 x 7	63	95	78	9	73	16	10	1,82	644 701 63	644 702 63
644 776 44	44 x 7	63	95	78	9	73	16	10	1,82	644 701 63	644 702 63
644 776 48	48 x 8	72	110	90	11	97	18	10	2,80	644 701 72	644 702 72
644 776 50	50 x 8	72	110	90	11	97	18	10	2,80	644 701 72	644 702 72
644 776 52	52 x 8	72	110	90	11	97	18	10	2,80	644 701 72	644 702 72
644 776 60	60 x 9	85	125	105	11	99	20	10	3,85	644 701 85	644 702 85
644 776 70	70 x 10	95	180	140	17	100	30	16	7,80	644 701 95	644 702 95

* Adapter see page 518.
** Lead angle is not in accordance with DIN 103.
Comparison of friction coefficients see page 514.



Ready-to-Install Flange Nuts with Metric ISO-Trapezoidal Thread DIN 103, Double-thread

Material: Grey cast iron GG25
Red brass Rg7 (CuSn7Zn4Pb7-C).
Tolerance zone 7H.



Ordering Details: e.g.: Product No. 645 770 16, flange nut GG25, Tr. 16 x 8 P4

Double-thread, Right Hand

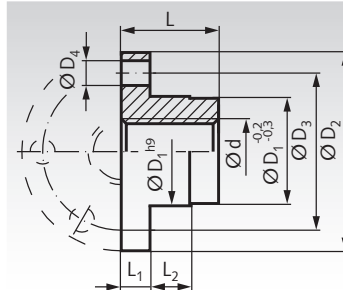
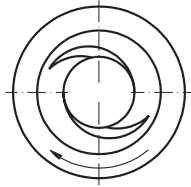
Product No. Grey Cast	Product No. Red Brass	Tr. Thread Ød mm	D ₁ mm	DIN ISO 2768 m						Weight		Accessories (order separately)*	
				D ₂ mm	D ₃ mm	6 x D ₄ mm	L mm	L ₁ mm	L ₂ mm	Grey Cast kg	Red Brass kg	Product No. adapter KARA	Product No. adapter KONA
645 770 16	645 771 16	16 x 8 P4	26	48	38	6	20	7	10	0,12	0,13	644 701 26	644 702 26
645 770 20	645 771 20	20 x 8 P4	30	58	45	7	22	8	12	0,17	0,20	644 701 30	644 702 30
645 770 24	645 771 24	24 x 10 P5	40	72	58	7	28	10	12	0,36	0,42	644 701 40	644 702 40
645 770 30	645 771 30	30 x 12 P6	50	82	68	7	44	12	15	0,85	0,95	644 701 50	644 702 50
645 770 40	645 771 40	40 x 14 P7	60	130	95	9	60	15	20	2,00	2,18	644 701 60	644 702 60

* Adapter see page 518.
Comparison of friction coefficients see page 514.



Ready-to-Install Flange Nuts EFM with Metric ISO-Trapezoidal Thread DIN 103, Double-thread

Material: Red brass Rg7 (CuSn7Zn4Pb7-C).
Tolerance zone 7H.



Ordering Details: e.g.: Product No. 645 775 12, flange nut EFM, Tr. 12 x 6 P3

Double-thread, Right Hand

Product No. Red Brass	Tr. Thread Ød mm	D ₁ mm	D ₂ mm	D ₃ mm	DIN ISO 2768 m				Weight kg	Accessories (order separately)*	
					6 x D ₄ mm	L mm	L ₁ mm	L ₂ mm		Product No. adapter KARA	Product No. adapter KONA
645 775 12	12 x 6 P3	28	48	38	6	28	12	8	0,24	644 701 28	644 702 28
645 775 16	16 x 8 P4	28	48	38	6	44	12	8	0,28	644 701 28	644 702 28
645 775 20	20 x 8 P4	32	55	45	7	44	12	8	0,35	644 701 32	644 702 32
645 775 24	24 x 10 P5	32	55	45	7	44	12	8	0,30	644 701 32	644 702 32
645 775 30	30 x 12 P6	38	62	50	7	46	14	8	0,42	644 701 38	644 702 38
645 775 40	40 x 14 P7	63	95	78	9	73	16	10	1,82	644 701 63	644 702 63

* Adapter see page 518.
Comparison of friction coefficients see page 514.

