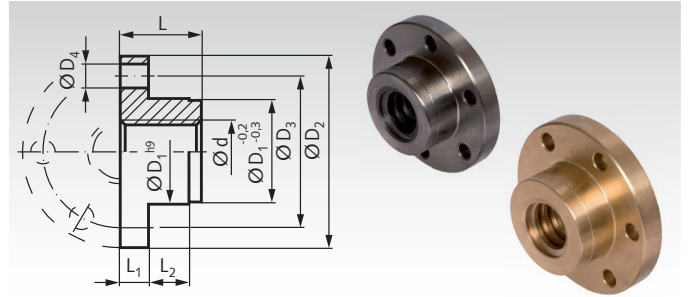


## Ready-to-Install Flange Nuts with Metric ISO-Trapezoidal Thread DIN 103, Single-Thread, Right Hand

**Material:** Grey cast iron GG25.  
Red brass Rg7 (CuSn7Zn4Pb7-C).  
Single thread, right hand.  
Tolerance zone 7H.



Ordering Details: e.g.: Product No. 644 770 16, flange nut made from GG25,  
Tr. 16 x 4, single thread, right hand

### Single thread, right hand

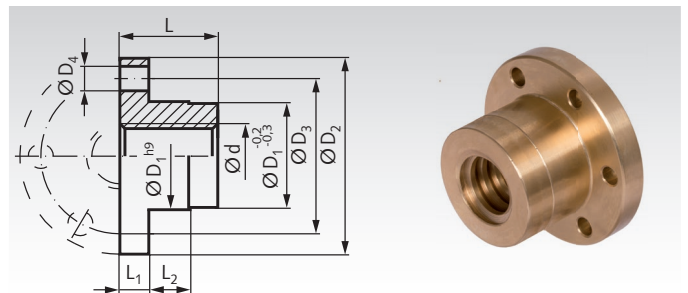
Product No. Grey Cast Right Hand	Product No. Red Brass Right Hand	Tr. Thread Ød mm	D <sub>1</sub> mm	DIN ISO 2768 m						Weight		Accessories (order separately)*	
				D <sub>2</sub> mm	D <sub>3</sub> mm	6 x D <sub>4</sub> mm	L mm	L <sub>1</sub> mm	L <sub>2</sub> mm	Grey Cast kg	Red Brass kg	Product No. adapter KARA	Product No. adapter KONA
644 770 16	644 771 16	16 x 4	26	48	38	6	20	7	10	0,12	0,13	644 701 26	644 702 26
-	644 771 18	18 x 4	30	58	45	7	22	8	12	-	0,22	644 701 30	644 702 30
644 770 20	644 771 20	20 x 4	30	58	45	7	22	8	12	0,17	0,20	644 701 30	644 702 30
644 770 24	644 771 24	24 x 5	40	72	58	7	28	10	12	0,36	0,42	644 701 40	644 702 40
-	644 771 28	28 x 5	45	78	65	7	35	10	15	-	0,59	644 701 45	644 702 45
644 770 30	644 771 30	30 x 6	50	82	68	7	44	12	15	0,85	0,95	644 701 50	644 702 50
644 770 36	644 771 36	36 x 6	55	110	85	7	55	15	15	1,45	1,60	644 701 55	644 702 55
644 770 40	644 771 40	40 x 7	60	130	95	9	60	15	20	2,00	2,18	644 701 60	644 702 60
644 770 50	644 771 50	50 x 8	80	160	120	11	65	15	20	3,25	3,68	644 701 80	644 702 80
644 770 60	644 771 60	60 x 9	80	160	120	11	65	15	20	2,95	3,26	644 701 80	644 702 80
-	644 771 70	70 x 10	95	160	130	12,5	75	22	20	-	4,85	644 701 95	644 702 95

\* Adapter see page K43\_N108.  
Comparison of friction coefficients see page 445.



## Ready-to-Install Flange Nuts EFM with Metric ISO-Trapezoidal Thread DIN 103, Single-Thread, Right Hand

**Material:** Red brass Rg7 (CuSn7Zn4Pb7-C).  
Single thread, right hand.  
Tolerance zone 7H.



Ordering Details: e.g.: Product No. 644 775 12, flange nut EFM,  
Tr. 12 x 3, single thread, right hand

### Single thread, right hand

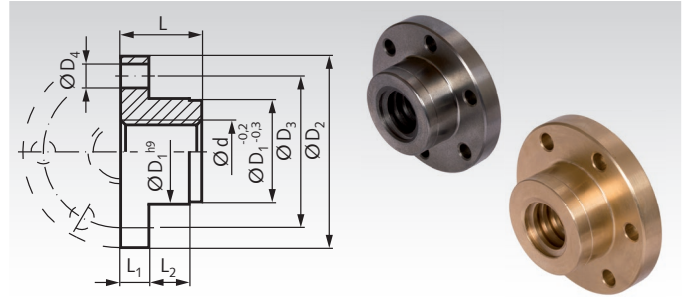
Product No. Red Brass Right Hand	Tr. Thread Ød mm	D <sub>1</sub> mm	D <sub>2</sub> mm	D <sub>3</sub> mm	DIN ISO 2768 m				Weight kg	Accessories (order separately)*	
					6 x D <sub>4</sub> mm	L mm	L <sub>1</sub> mm	L <sub>2</sub> mm		Product No. adapter KARA	Product No. adapter KONA
644 775 12	12 x 3	28	48	38	6	28	12	8	0,24	644 701 28	644 702 28
644 775 14	14 x 4**	28	48	38	6	35	12	8	0,28	644 701 28	644 702 28
644 775 16	16 x 4	28	48	38	6	44	12	8	0,28	644 701 28	644 702 28
644 775 18	18 x 4	28	48	38	6	44	12	8	0,26	644 701 28	644 702 28
644 775 20	20 x 4	32	55	45	7	44	12	8	0,35	644 701 32	644 702 32
644 775 24	24 x 5	32	55	45	7	44	12	8	0,30	644 701 32	644 702 32
644 775 28	28 x 5	38	62	50	7	46	14	8	0,42	644 701 38	644 702 38
644 775 30	30 x 6	38	62	50	7	46	14	8	0,42	644 701 38	644 702 38
644 775 32	32 x 6	38	62	50	7	46	14	8	0,38	644 701 38	644 702 38
644 775 36	36 x 6	45	70	58	7	59	16	10	0,64	644 701 45	644 702 45
644 775 40	40 x 7	63	95	78	9	73	16	10	1,82	644 701 63	644 702 63
644 775 44	44 x 7	63	95	78	9	73	16	10	1,82	644 701 63	644 702 63
644 775 48	48 x 8	72	110	90	11	97	18	10	2,80	644 701 72	644 702 72
644 775 50	50 x 8	72	110	90	11	97	18	10	2,80	644 701 72	644 702 72
644 775 52	52 x 8	72	110	90	11	97	18	10	2,80	644 701 72	644 702 72
644 775 60	60 x 9	85	125	105	11	99	20	10	3,85	644 701 85	644 702 85
644 775 70	70 x 10	95	180	140	17	100	30	16	7,80	644 701 95	644 702 95

\* Adapter see page K43\_N108.  
\*\* Lead angle is not in accordance with DIN 103.  
Comparison of friction coefficients see page 445.



## Ready-to-Install Flange Nuts with Metric ISO-Trapezoidal Thread DIN 103, Single-Thread, Left Hand

**Material:** Grey cast iron GG25.  
Red brass Rg7 (CuSn7Zn4Pb7-C).  
Single thread, left hand.  
Tolerance zone 7H.



Ordering Details: e.g.: Product No. 644 773 16, flange nut made from GG25,  
Tr. 16 x 4, single thread, left hand

### Single thread, left hand

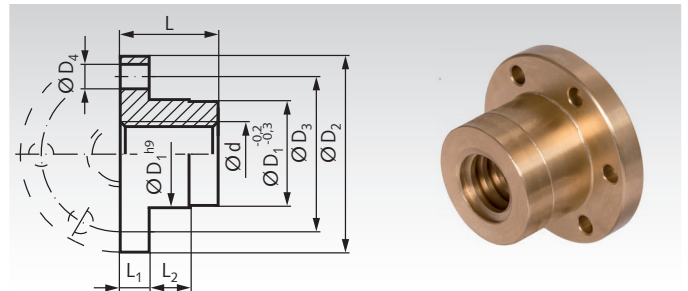
Product No. Grey Cast Left Hand	Product No. Red Brass Left Hand	Tr. Thread Ød mm	D <sub>1</sub> mm	DIN ISO 2768 m						Weight		Accessories (order separately)*	
				D <sub>2</sub> mm	D <sub>3</sub> mm	6 x D <sub>4</sub> mm	L mm	L <sub>1</sub> mm	L <sub>2</sub> mm	Grey Cast kg	Red Brass kg	Product No. adapter KARA	Product No. adapter KONA
644 773 16	644 774 16	16 x 4	26	48	38	6	20	7	10	0,12	0,13	644 701 26	644 702 26
-	644 774 18	18 x 4	30	58	45	7	22	8	12	-	0,22	644 701 30	644 702 30
644 773 20	644 774 20	20 x 4	30	58	45	7	22	8	12	0,17	0,20	644 701 30	644 702 30
644 773 24	644 774 24	24 x 5	40	72	58	7	28	10	12	0,36	0,42	644 701 40	644 702 40
-	644 774 28	28 x 5	45	78	65	7	35	10	15	-	0,59	644 701 45	644 702 45
644 773 30	644 774 30	30 x 6	50	82	68	7	44	12	15	0,85	0,95	644 701 50	644 702 50
644 773 36	644 774 36	36 x 6	55	110	85	7	55	15	15	1,45	1,60	644 701 55	644 702 55
644 773 40	644 774 40	40 x 7	60	130	95	9	60	15	20	2,00	2,18	644 701 60	644 702 60
644 773 50	644 774 50	50 x 8	80	160	120	11	65	15	20	3,25	3,68	644 701 80	644 702 80
644 773 60	644 774 60	60 x 9	80	160	120	11	65	15	20	2,95	3,26	644 701 80	644 702 80
-	644 774 70	70 x 10	95	160	130	12,5	75	22	20	-	4,85	644 701 95	644 702 95

\* Adapter see page K43\_N108.  
Comparison of friction coefficients see page 445.



## Ready-to-Install Flange Nuts EFM with Metric ISO-Trapezoidal Thread DIN 103, Single-Thread, Left Hand

**Material:** Red brass Rg7 (CuSn7Zn4Pb7-C).  
Single thread, left hand.  
Tolerance zone 7H.



Ordering Details: e.g.: Product No. 644 776 12, flange nut EFM,  
Tr. 12 x 3, single thread, left hand

### Single thread, left hand

Product No. Red Brass Left Hand	Tr. Thread Ød mm	D <sub>1</sub> mm	D <sub>2</sub> mm	D <sub>3</sub> mm	DIN ISO 2768 m				Weight kg	Accessories (order separately)*	
					6 x D <sub>4</sub> mm	L mm	L <sub>1</sub> mm	L <sub>2</sub> mm		Product No. adapter KARA	Product No. adapter KONA
644 776 12	12 x 3	28	48	38	6	28	12	8	0,24	644 701 28	644 702 28
644 776 14	14 x 4**	28	48	38	6	35	12	8	0,28	644 701 28	644 702 28
644 776 16	16 x 4	28	48	38	6	44	12	8	0,28	644 701 28	644 702 28
644 776 18	18 x 4	28	48	38	6	44	12	8	0,26	644 701 28	644 702 28
644 776 20	20 x 4	32	55	45	7	44	12	8	0,35	644 701 32	644 702 32
644 776 24	24 x 5	32	55	45	7	44	12	8	0,30	644 701 32	644 702 32
644 776 28	28 x 5	38	62	50	7	46	14	8	0,42	644 701 38	644 702 38
644 776 30	30 x 6	38	62	50	7	46	14	8	0,42	644 701 38	644 702 38
644 776 32	32 x 6	38	62	50	7	46	14	8	0,38	644 701 38	644 702 38
644 776 36	36 x 6	45	70	58	7	59	16	10	0,64	644 701 45	644 702 45
644 776 40	40 x 7	63	95	78	9	73	16	10	1,82	644 701 63	644 702 63
644 776 44	44 x 7	63	95	78	9	73	16	10	1,82	644 701 63	644 702 63
644 776 48	48 x 8	72	110	90	11	97	18	10	2,80	644 701 72	644 702 72
644 776 50	50 x 8	72	110	90	11	97	18	10	2,80	644 701 72	644 702 72
644 776 52	52 x 8	72	110	90	11	97	18	10	2,80	644 701 72	644 702 72
644 776 60	60 x 9	85	125	105	11	99	20	10	3,85	644 701 85	644 702 85
644 776 70	70 x 10	95	180	140	17	100	30	16	7,80	644 701 95	644 702 95

\* Adapter see page K43\_N108.  
\*\* Lead angle is not in accordance with DIN 103.  
Comparison of friction coefficients see page 445.

