

Flanged Hubs for Toothed Shafts DIN 5480

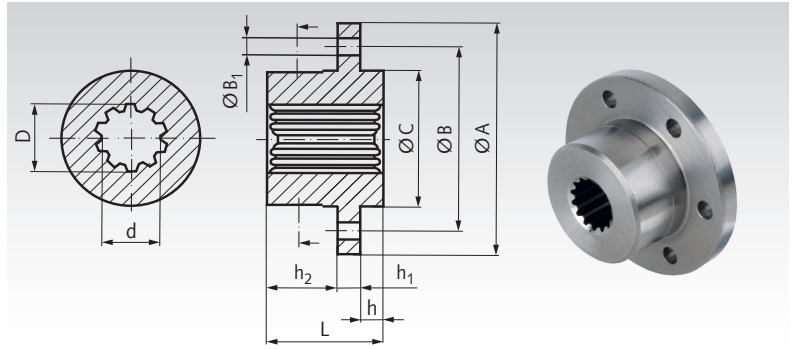
Material: Steel C45.

Flanged bolt-on hubs, for toothed shafts with profile DIN 5480.

For shaft-to-hub connection, for torque transmission and centering. Sliding fit with our corresponding shafts DIN 5480. The position of the bore holes does not refer to the toothing.

Module 1.25. Pressure angle 30°. Tolerance 9H.

Ordering Details: e.g.: Product No. 648 215 10, Flanged Hub DIN 5480 N 15 x 1.25 x 10, Length 25 mm.



Product No.	Profile mm	Number of Teeth	D mm	d mm	A mm	B mm	B ₁ mm	C ^{h10} mm	L mm	h mm	h ₁ mm	h ₂ mm	Weight kg
648 215 10	N 15 x 1,25 x 10	10	15	12,5	58	45	6 x 4,5	32	25	5,2	6	13,8	0,2
648 220 10	N 20 x 1,25 x 14	14	20	17,5	76	60	6 x 6,6	45	40	7	8	25	0,5
648 225 10	N 25 x 1,25 x 18	18	25	22,5	96	78	6 x 6,6	60	45	11	10	24	1,1
648 238 10	N 38 x 1,25 x 29	29	38	35,5	96	78	6 x 6,6	60	45	11	10	24	1,1
648 238 11*	N 38 x 1,25 x 29	29	38	35,5	135	105	6 x 11	75	65	16	18	31	3,1
648 238 12*	N 38 x 1,25 x 29	29	38	35,5	170	135	8 x 14	100	80	16	20	44	6,5

* Profile length only 21 mm at both sides of the hub.

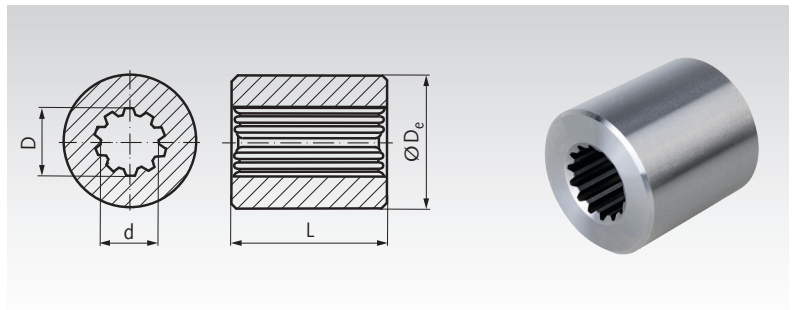
Hubs for Toothed Shafts DIN 5480

Material: Steel 16MnCr5.

Sleeves for toothed shafts with profile DIN 5480.

For shaft-to-hub connection, for torque transmission and centering. Sliding fit with our corresponding shafts DIN 5480.

Module 1.25. Pressure angle 30°. Tolerance 9H.



Ordering Details: e.g.: Product No. 648 215 00, Hub DIN 5480 N 15 x 1.25 x 10

Product No.	Profile mm	Number of Teeth	D mm	d mm	D _e ^{h8} mm	L mm	Weight kg
648 215 00	N 15 x 1,25 x 10	10	15	12,5	38	40	0,31
648 220 00	N 20 x 1,25 x 14	14	20	17,5	38	40	0,27
648 225 00	N 25 x 1,25 x 18	18	25	22,5	38	40	0,25
648 238 00	N 38 x 1,25 x 29	29	38	35,5	58	40	0,45